

# AGENDA

**Meeting:** Salisbury Area Board  
**Place:** Online (links below)  
**Date:** Thursday 21 January 2021  
**Time:** 6.00 pm

---

The Area Board welcomes and invites contributions from members of the public in this online meeting.

**[To join the meeting and be able to enter in the discussion, please use this link](#)**

[Guidance on how to access this meeting online is available here](#)

Alternatively, anyone who wishes to watch the meeting only, can do so [here](#)

If you have any queries please contact Lisa Moore (Democratic Services Officer), direct line 01722 434560 or [lisa.moore@wiltshire.gov.uk](mailto:lisa.moore@wiltshire.gov.uk)

All the papers connected with this meeting are available on the Council's website at [www.wiltshire.gov.uk](http://www.wiltshire.gov.uk) and press enquiries to Communications on direct lines (01225) 713114 / 713115

---

## **Wiltshire Councillors**

Cllr Derek Brown OBE, St Mark's and Bishopdown  
Cllr Brian Dalton, Harnham  
Cllr Matthew Dean, St Paul's  
Cllr Mary Douglas, St Francis and Stratford  
Cllr Atiqul Hoque, St Edmund and Milford (Chairman)  
Cllr Sven Hocking, St Martin's and Cathedral (Vice-Chairman)  
Cllr Ricky Rogers, Bemerton  
Cllr John Walsh, Fisherton and Bemerton Village

## **Recording and Broadcasting Information**

Wiltshire Council may record this meeting for live and/or subsequent broadcast on the Council's website at <http://www.wiltshire.public-i.tv>. At the start of the meeting, the Chairman will confirm if all or part of the meeting is being recorded. The images and sound recordings may also be used for training purposes within the Council.

By entering the meeting room you are consenting to being recorded and to the use of those images and recordings for broadcasting and/or training purposes.

The meeting may also be recorded by the press or members of the public.

Any person or organisation choosing to film, record or broadcast any meeting of the Council, its Cabinet or committees is responsible for any claims or other liability resulting from them so doing and by choosing to film, record or broadcast proceedings they accept that they are required to indemnify the Council, its members and officers in relation to any such claims or liabilities.

Details of the Council's Guidance on the Recording and Webcasting of Meetings is available on request. Our privacy policy can be found [here](#).

	Time
<p>1 <b>Welcome and Introductions</b></p>	6.00pm
<p>2 <b>Apologies for Absence</b></p>	
<p>3 <b>Minutes</b> (<i>Pages 7 - 18</i>)</p> <p>To confirm the minutes of the meeting held online on 3 December 2020, as attached.</p>	
<p>4 <b>Declarations of Interest</b></p> <p>To receive any declarations of disclosable interests or dispensations granted by the Standards Committee.</p>	
<p>5 <b>Chairman's Updates</b></p> <p>The Chairman will give an update on outcomes and actions arising from previous meetings of the Area Board.</p>	
<p>6 <b>Information items</b> (<i>Pages 19 - 30</i>)</p> <ul style="list-style-type: none"> <li>a. CCG</li> <li>b. Healthwatch Wiltshire</li> <li>c. Census for Wiltshire</li> <li>d. Wiltshire Council Updates: <ul style="list-style-type: none"> <li>• Covid-19 Update</li> <li>• Local Plan Review &amp; Gypsy &amp; Traveller Consultations</li> </ul> </li> </ul>	
<p>7 <b>Partner and Community Updates</b> (<i>Pages 31 - 50</i>)</p> <p>To note the written updates attached to the agenda and to receive any verbal updates from representatives present.</p> <ul style="list-style-type: none"> <li>a) PCC – Precept Consultation</li> </ul> <p><b>Public consultation survey (open from 5 January to 2 February)</b>  - <a href="https://www.surveymonkey.co.uk/r/PNHBKSG">https://www.surveymonkey.co.uk/r/PNHBKSG</a>  <b>PCC Precept Video</b> - <a href="https://youtu.be/eRMtE_YxdWk">https://youtu.be/eRMtE_YxdWk</a></p> <ul style="list-style-type: none"> <li>b) Police CPT – written update attached <a href="#">website</a></li> <li>c) Fire</li> <li>d) Salisbury City Council – paper attached</li> <li>e) Salisbury BID – <a href="#">website</a></li> <li>f) Maltings &amp; River Park – paper attached</li> <li>g) Safer &amp; Supportive Salisbury – paper attached</li> <li>h) Champions Update</li> </ul> <p><b>Note: Speakers are reminded to limit verbal updates to 3 minutes.</b></p>	6.15pm

8 **Salisbury Status Report (Pages 51 - 66)**

6.35pm

The Board is asked to consider the Status Report that summarises what the key issues are for the community area as a result of analysing local data and discussions with local stakeholders.

It is recommended:

- (1) That the Area Board approves and adopts the Community Status report
- (2) That the Area Board produces a rolling action plan including up to 5 priority actions at any one time to demonstrate where it will contribute to addressing the identified issues.
- (3) That the Area Board will prioritise its resources including funding upon those issues identified in the status report.
- (4) That the Area Board requests the Community Engagement Manager to work with key partners, agencies and community groups to encourage them to consider where they are best placed to take actions around the priorities identified.
- (5) That regular updates are submitted to the Area Board on progress made in relation to its own action plan.
- (6) That the Area Board expresses its thanks to those who gave their time to help bring this report together

Officer: Marc Read, Community Engagement Manager

9 **New Salisbury Trails App explores the City's rich heritage and hidden histories**

6.45pm

A presentation on the new Salisbury Trails App that was launched in December 2020, for residents and visitors to discover the stories behind the people and events that shaped our city's history.

*Officer: Ruth Butler – Heritage Education Officer*

10 **Future High Street Fund Update**

7.05pm

An update on the plans following the announcement that Salisbury has been awarded £9,355,731 as part of the Government's Future High Streets Fund.

*Officer: Victoria Molony – Head of South Wilts Economic Recovery*

<b>Budgets</b>	<b>Community Area Grants</b>	<b>Young People</b>	<b>Health &amp; Wellbeing</b>
<b>Current Balance</b>	£24,810.16	£14,962.00	£1,004.18

To consider applications for funding as detailed in the attached report and listed below.

Community Area Grants Scheme applications:

<b>Applicant</b>	<b>Amount requested</b>
<b>Applicant:</b> ArtCare <b>Project Title:</b> ArtCare Well-being TV at Salisbury District Hospital  <a href="#">View full application</a>	£2,500.00
<b>Applicant:</b> The Bridge Youth Project <b>Project Title:</b> The Bridge Youth Project Online Mentoring Programme Pastoral care for students in schools  <a href="#">View full application</a>	£700.00
<b>Applicant:</b> Area Board Initiative <b>Project Title:</b> Street Name Plates  <a href="#">View full application</a>	£12,000.00

Young People's Funding Applications:

<b>Applicant</b>	<b>Amount requested</b>
<b>Applicant:</b> Splash (Part of Community First) <b>Project Title:</b> Splash in Salisbury  <a href="#">View full application</a>	£5,000.00
<b>Applicant:</b> Rise 61 <b>Project Title:</b> Bike Hub - After School Club	£5,000.00

<a href="#">View full application</a>	
<b>Applicant</b>	<b>Amount requested</b>
<b>Applicant:</b> MySalisbury <b>Project Title:</b> Project Spark Working Title <a href="#">View full application</a>	£4,991.97
<b>Applicant</b>	<b>Amount requested</b>
<b>Applicant:</b> St Francis Church <b>Project Title:</b> St. Francis Youth CV19 Recovery amp Detached <a href="#">View full application</a>	£1,500.00

12 **Close**

**8.00pm**

The date of the next meeting is Thursday 4 March 2021 at 6.00pm.

# MINUTES

**Meeting:** Salisbury Area Board  
**Place:** Online  
**Date:** 3 December 2020  
**Start Time:** 6.00 pm  
**Finish Time:** 8.45 pm

---

Please direct any enquiries on these minutes to:

Lisa Moore (Democratic Services Officer), Tel: 01722 434560 or (e-mail) [lisa.moore@wiltshire.gov.uk](mailto:lisa.moore@wiltshire.gov.uk)

Papers available on the Council's website at [www.wiltshire.gov.uk](http://www.wiltshire.gov.uk)

---

## **In Attendance:**

### **Wiltshire Councillors**

Cllr Atiqul Hoque (Chairman) Cllr Sven Hocking (Vice-Chairman),  
Cllr Derek Brown OBE, Cllr Brian Dalton, Cllr Matthew Dean, Cllr Mary Douglas,  
Cllr Atiqul Hoque (Chairman), Cllr Ricky Rogers and Cllr John Walsh

### **Wiltshire Council Officers**

Lisa Moore, Democratic Services Officer  
Marc Read, CEM - Salisbury

### **Partners**

Wiltshire Police – Inspector Pete Sparrow  
Wiltshire Fire and Rescue Service – Station Manager Matthew Maggs

---

<u>Agenda Item No.</u>	<u>Summary of Issues Discussed and Decision</u>
32	<p><u>Welcome and Introductions</u></p> <p>The Chairman Cllr Atiqul Hoque welcomed everyone to the online meeting of the Salisbury Area Board and invited the members of the Board to introduce themselves.</p>
33	<p><u>Apologies for Absence</u></p> <p>There were none.</p>
34	<p><u>Minutes</u></p> <p><b><u>Decision</u></b>  <b>The minutes of the meeting held on Thursday 8 October 2020 were agreed as a correct record and would be signed by the Chairman at a later date.</b></p>
35	<p><u>Declarations of Interest</u></p> <p>In relation to item 10 – Community Area Grants, Cllr Hocking noted that he was in discussions with the applicant for the Anybody Can Cook application, regarding the possible use of his catering equipment. Due to this he would not take part in the discussion or vote on the item.</p> <p>In relation to item 10 – Health &amp; Wellbeing Funding – Safe and Supportive Salisbury Application, Cllr Walsh noted that in his capacity of City Mayor, he featured in the booklet to be printed, but as this was a non-pecuniary interest he would take part in the discussion and vote on the item.</p>
36	<p><u>Chairman's Updates</u></p> <p><u>River Park</u>  Following on from the presentation at the last Area Board, the consultation on the River Park Masterplan and Phase 1 proposals of the River Park scheme had now commenced. Details could be found on the Council's web-site <a href="http://www.wiltshire.gov.uk/salisbury-future">www.wiltshire.gov.uk/salisbury-future</a> and would close on 8 January.</p> <p><u>Area Board Champions</u>  Both of the Area Board Champions were praise and thanked for their work.</p> <p>Carers Champion, Helen Dowse, was organising a 'Christmas Stocking Surprise' for nearly 100 of the unpaid carers in the city. Helen had been working tirelessly on the project, collecting donations and making up Christmas Stockings for these often, unsung heroes in our community.</p> <p>Older People's Champion, Irene Kohler, had organised the Silver Salisbury teas project in October, which saw 175 older people, who were unable to get out and</p>



	<p>about or were still isolating or shielding, receive a fantastic afternoon tea. Not content with this success, Irene was now looking to repeat the project in February 2021.</p>
37	<p><u>Partner and Community Updates</u></p> <p>The Board noted the written updates attached to the agenda and received the following verbal updates:</p> <p><u>Police - Inspector Pete Sparrow</u> The figures around crime reporting were pleasing, recorded crime was at 199 crimes for the whole of Salisbury in November 2020, which was significantly down compared to the same period last November where there were 331 recorded crimes. Violent crime was also down from 95 to 73 for the same period.</p> <p>Inspector Sparrow would try to circulate a report to members in due course.</p> <p><u>Fire – Station Manager Matthew Maggs</u> In addition to the written report attached to the agenda, Matty noted that there had not been a dramatic increase in attendance, it had in fact decreased, this was put down to more people working from home.</p> <p><u>Salisbury City Council – Liz Sirman</u> The shops were now open please encourage everyone to shop locally. The Christmas markets will open on Sunday.</p>
38	<p><u>The Impact of Covid on Schools, Health &amp; Care Services in Salisbury</u></p> <p>The Board had invited representatives from some of the services in Salisbury to share how Covid had impacted on their organisation and what measures they had needed to take to cope and meet the needs of the community during the pandemic.</p> <p><u>Katy Gillingham - Salisbury Medical Practice.</u></p> <p>Katy ran through a presentation which detailed how they have coped at the practice and some of the steps taken:</p> <p><u>Impact and adaptations</u></p> <ul style="list-style-type: none"> <li>• Branch site changes</li> <li>• Pre-booked appointments only</li> <li>• New appointment system</li> <li>• Hot and cold sites</li> <li>• Working with other Practices</li> <li>• Referrals/Minor Surgery</li> <li>• Adapted flu clinics</li> </ul>

- Fisherton House site was closed to walk in patients
- Bemerton Heath surgery recently re-open
- The min impact had been a review of the appointment system, and the adaptation to a telephone system.
- Introduction of same day GP telephone appointments - morning and afternoon.
- Video consultation – triage could view symptoms such as rash etc.

A huge amount of calls were received especially in the morning, so the phone lines were increased to 60, resulting in patients getting through a lot quicker.

There had been the introduction of 'hot' and 'cold' sites, where people with certain symptoms could be separated and then seen in the hot site.

There had been a big impact on the flu clinics, these were held at Sarum Academy and there had been wonderful feedback following these.

It was hoped that here would be more information to circulate on the Covid Vaccine clinics soon.

#### Covid-19 Procedure

- Cleaning high touch areas three times a day
- Screening patients before attending appointments
- Wiping chairs down after each patient
- Open windows to ensure ventilation
- Socially distanced waiting rooms
- Patients arrive 5 minutes before their appointment
- Face coverings/PPE

#### Positive Outcomes

- Staff working from one site –teamwork
- Same day appointments for patients
- Introduction of video consultations
- Uptake of online services
- Engagement with our local community

Thank you to all of the businesses and individuals that donated PPE at the start of the Covid pandemic. We are still open for business

#### Questions and comments:

- All very grateful for the hard work of the national health service over the last months, it really had been an extraordinary period.
- Could you explain your personal role? Answer: Engaging with the community, to be the in-between person, I am able to relay information back to the GPs, and help the practice be more of a community hub rather than just a health centre.

- The flu clinic at Sarum Academy was very well run, I attended and there was an orderly process, efficient and effortless. Congratulations. If that is a model for the Covid vaccination clinics, they would be seamless.

Matthew Airey from Wessex Care.

We are a strategic partner of the local authority and the NHS our provision ranges from nursing care through to specialist dementia care

Main challenges

Some of the equipment needed and its availability, however we had pre-considered this and had been purchasing PPE from Nov/Dec the previous year, to be ready.

As a strategic partner we were asked to set up a hospital discharge support unit in direct support of the hospital, very quickly when the first spike was identified around the Easter weekend.

During modelling it was seen there was a risk to the hospital, so units were set up as Covid Hot units. All patients discharged that were covid positive, came to us and we managed it in our setting. We recruited within our team from those that were willing to take on this role.

This service ran through until it was decommissioned at the end of July. All of those that were supporting us did an amazing job.

The support and things we received from the community from scrubs, pizzas, beauty products showed outstanding support which was much appreciated.

Wanted to ensure that contact between residents and their families continued until the guidance came in.

Focus was always to allow as much visiting as was safely possible. Staff were tested every 7 days and the residents tested every 28 days. This would change to staff being tested twice a week and residents once a week. With some of the new tests available, this may allow us to increase some of the visiting contact.

The new normal for us is a testing regime, support to our residents and the hospital with discharge.

Little Manor care centre had recently opened and was a dedicated rehab unit, to get people out of hospital and keep those beds free for further need.

Winter planning for the south of Wiltshire was the next big test, we feel prepared and well equipped. Had no positive covid identified in our units or community services. That was testament to all of the members of staff in doing a fantastic

	<p>job in maintaining high standards and good use of PPE.</p> <p>We are expecting to be very busy with lots of challenges.</p> <p>Questions and comments:</p> <ul style="list-style-type: none"> <li>• Do you feel confident that the hospital had it organised so that the care homes did not have to accept any patients that came out? <u>Answer:</u> In Wiltshire they quickly responded to put a stop to that and it helped to prevent an outbreak of covid in Wiltshire. Covid tests were taken within 48 hours of discharge, patients were initially isolated and monitored. I am confident but never complacent</li> <li>• There was mention in the media about mental health issues for both patients and relatives, was there an increase? <u>Answer:</u> It was difficult to say, as we recognised there may be a rise early on and had put in measures to mitigate that. Where it was recognised, we had been able to give increased support to that individual. However, all ages were susceptible to not seeing family, the older generation are incredibly resilient. Yes it was something that we watch out for. I think the issue we were more concerned about was the anxiety of individuals and family members. We had a member of staff who was in contact with families, we see it as part of our community roll to support the family members. Staff had been amazing, but this has come at a cost, they are tired. We have clear support mechanisms in place.</li> <li>• In the beginning was it difficult to get hold of the test kits for care homes? <u>Answer:</u> Yes, as the test kits didn't exist at all in the beginning. What we did was we got involved with the early pilots.</li> </ul> <p>Gareth Jones – Sarum Academy was unable to attend.</p>
39	<p><u>The Future of Salisbury City Hall</u></p> <p>We have been asked by Cllr Rogers to support the re-opening of the Salisbury City Hall as soon as it is possible and safe to do so.</p> <p>The Board was asked to support the proposal of Cllr Rogers, to request that Wiltshire Council conducts any community engagement and/or consultation should the usage change, through the Salisbury Area Board.</p> <p>Cllr Rogers noted that the 8 Board Cllrs were the representatives of the city and should be involved if there was to be any change to the operation. People had been in touch with him about this issue as it was a much-loved venue in the city. It was important to be able to take the views of the public</p> <p>Cllr Walsh supported the recommendation, adding that the city Hall was build with money put together for a war memorial for people that died in the second world war. There would be uproar if anything was done that was not considered</p>

	<p>by the Area Board.</p> <p>Cllr Dean had previously spoke to the Leader of the Council, when it first closed, he had assured him that there were no plans for a change of use and that when permitted the City Hall would be in use again for a new calendar of events with the existing staff.</p> <p>Cllr Dalton noted that all of the staff at City Hall had been made redundant so there would not be a staff to run it if it did open tomorrow.</p> <p><b><u>Decision</u></b>  <b>The Salisbury Area Board requested that should the use of City Hall change in any way, that it conducts any community engagement and/or consultation through the Area Board.</b></p>
40	<p><u>Community Area Transport Group (CATG)</u></p> <p>The Board noted the report from the last meeting on 17 November which was attached to the agenda.</p> <p>Cllr Hocking (Chairman of CATG) gave an update on the recommendations for funding and current schemes.</p> <p>The Street Nameplate Refurbishment Scheme was nearly complete. A list of work already carried out and the outstanding work in the two remaining areas (Bishopdown and Harnham) was being compiled for consideration and would be brought to a future meeting.</p> <p><b><u>Decision</u></b>  <b>The Salisbury Area board approved the recommendations for funding as detailed in the attached CATG report.</b></p>
41	<p><u>Area Board Funding</u></p> <p>The Board considered the applications for funding as detailed in the agenda pack. Applicants present were invited to give a brief overview of their projects, followed by an opportunity for questions.</p> <p>Community Area Grants:</p> <p><u>Hampworth Croquet Club – requested £5,000</u>  The applicant Stephen Bennett spoke in support of the project.</p> <p><b><u>Questions:</u></b></p> <ul style="list-style-type: none"> <li>• How many members did you have? <u>Answer:</u> Approx. 60</li> </ul>

- What fundraising had taken place? Answer: We had been applying for funding and were successful with £1k from Persimmons Homes, Membership fees brought in £3500, and crowd funding supported by sports England. Also applied to Southern Wilts AB which also allocated £5000. Had approached PC however, had not had much joy in communicating with them.
- Why had there been a change in the lawn care situation? Answer: The previous system was for all of our funds to be handed over to the landlord in return for maintenance. That arrangement had ended and now there was a new regime where we must maintain the lawn ourselves.
- The club was outside of our community area. Should be down to the PC as well.
- You are equidistant to Southampton, so I suggest you also look further afield to provide some support.
- There were only 2 clubs that offered this across the whole of Wiltshire, there must be quite a few of our residents who partake. Happy to support some level of funding.
- Cllr Dean - £5k was a generous amount from Southern AB. As there were only 50 – 60 members, it was likely half would be from the Salisbury area. I propose £1000. This was seconded by Cllr Rogers.

**Decision**

**The Hampworth Croquet club was awarded £1000 towards the project.**

***Reason***

***The application met the Community Area Grants criteria for 2020/21.***

Five Rivers Indoor Bowls club – requested £1,000

The applicant, Diane Makepeace spoke in support of the application.

The Chairman moved the motion to award in full, this was seconded by Cllr Douglas.

**Decision**

**The Five Rivers Indoor Bowls club was awarded £1000 towards the purchase of a motorised wheelchair to accommodate greater participation.**

***Reason***

***The application met the Community Area Grants criteria for 2020/21.***

Devenish Bradshaw Trust – requested £2,127.44

The applicant David Burton spoke in support of the application.

Questions and comments:

- Cllr Dean noted that whilst the project was a nice thing to do, he felt that perhaps it was not as deserving as some of the other projects.
- The exercise aspect was supported by some members.

The motion to award a lower amount of £1000 was put forward by Cllr Dean.

This was seconded by Cllr Walsh.

**Decision**

**The Devenish Bradshaw Trust was awarded £1000 towards the city to countryside dog trails.**

***Reason***

***The application met the Community Area Grants criteria for 2020/21.***

Secret Spitfire Charity – requested £5,000

The applicant Chris Walley spoke in support of the application.

Questions and comments

The Chairman noted his support for this exciting project and moved the motion to award the full amount. This motion was not seconded.

Cllr Brown supported the outstanding project, noting how well organised and well supported it was.

Cllr Dean moved the motion of an award of £3000. This was seconded by Cllr Walsh.

Cllr Douglas lost connection briefly but was able to re-join before the next application was considered.

**Decision**

**The Secret Spitfire Charity was awarded £3000 towards the Spitfire project.**

***Reason***

***The application met the Community Area Grants criteria for 2020/21.***

The Any Body Can Cook CIC – requested £5000

The applicant Catherine Maxwell spoke in support of the application.

Cllr Hocking had declared a non-pecuniary interest and chose not to speak or vote on this application.

Cllr Dean noted his support for the project, adding that the Pantry Partnership was a success story for Salisbury. He then moved the motion to award the full amount. This was seconded by Cllr Douglas.

**Decision**

**The Anybody Can Cook was awarded £5000 towards the Local Pantry project.**

***Reason***

***The application met the Community Area Grants criteria for 2020/21.***

Milford Street Bridge Project - requested £980

The Applicant Clare Christopher spoke in support of the project.

Cllr Dean moved the motion to support in full. This was seconded by Cllr Hocking.

**Decision**

**The Milford Street Bridge Project was awarded £980 towards the Project.**

***Reason***

***The application met the Community Area Grants criteria for 2020/21.***

Alabare Christian Care & Support - £2,884.12

The applicant Nicky Cushing spoke in support of the project.

Questions and comments:

- What reserves do you have? Answer: We have £424k – 350 people in our care every night, that is one months running costs.
- When we previously visited 5 years ago, was under impression bedding was funded by WC housing – is that not the case? Answer: No when a sleeper moves on the bedding goes with them or is disposed of. Have been turned down for 3 lots of financial support since the start of Covid.

Cllr Hoque moved the motion to award a lower amount of £2000. This motion was not carried.

Cllr Dean then moved the motion to award the full amount. This was seconded by Cllr Douglas.

**Decision**

**The Alabare Christian Care & Support was awarded £2,884.12 towards the project.**

***Reason***

***The application met the Community Area Grants criteria for 2020/21***

Macklin Road Residents Association – requested £389.00

The applicant John Abbott spoke in support of the project.

Cllr Walsh moved the motion to award in full. This was seconded by Cllr Hoque.

**Decision**

**The Macklin Road Residents Association was awarded £389 towards the project.**

***Reason***

***The application met the Community Area Grants criteria for 2020/21***

Young People Grants



	<p><u>Wiltshire Youth Futsal League – requested £1,000</u> The applicant Stuart Garnett spoke in support of the application.</p> <p><b><u>Decision</u></b> <b>The Wiltshire Youth Futsal League was awarded £1000 from the Youth Funding budget 2020/21.</b></p> <p><u>Health &amp; Wellbeing Funding</u></p> <p>Safer &amp; Supportive Salisbury - £550 The applicant Anne Trevett spoke in support of the application.</p> <p>Cllr Walsh reminded the Board that he had declared a non-prejudicial interest. He chose not to take part in the discussion or vote on this application.</p> <p>Decision Safer &amp; Supportive Salisbury was awarded £550 from the Health &amp; Wellbeing budget for 2020/21.</p> <p><u>Area Board Intergeneration Project</u></p> <p>The Board received an update from the Community Engagement Manager on the Intergeneration Project, as detailed in the agenda.</p> <p>Cllr Rogers had led a Panel which had considered the three bids for funding from this intergeneration project. The Panel recommended that funding be awarded to the Salisbury Museum.</p> <p>Cllr Brown move motion to approve the recommendation, this was seconded by Cllr Rogers.</p> <p>Sarah Gregson – Community Curator at Salisbury Museum gave an intro to the proposed Intergeneration Oral History project.</p> <p><b><u>Decision</u></b> <b>The Salisbury Area Board awarded £5000 to Salisbury Museum to run the Intergeneration project.</b></p>
42	<p><u>Close</u></p> <p>The Chairman thanked everyone for attending and noted that the next meeting of the Salisbury Area Board would be held on 21 January 2021.</p>

This page is intentionally left blank



Bath and North East Somerset,  
Swindon and Wiltshire  
Clinical Commissioning Group

## Update for Wiltshire Area Boards

January 2021

### **Coronavirus vaccination**

December saw the start of the roll out of the coronavirus vaccination in Wiltshire by our Primary Care Networks. Initially, local vaccination centres were set up in Devizes and Chippenham, with sites in Westbury, Ramsbury, and Melksham vaccinating in the following weeks.

Following government guidance on priorities our first focus is on vaccinations for older residents in care homes, all those over 80 years of age and health and social care workers.

### **Approval to become an Integrated Care System – BSW Partnership**

In December health and care organisations in Bath and North East Somerset, Swindon and Wiltshire (BSW) were confirmed by NHS England and Improvement as meeting the criteria to become an Integrated Care System.

An Integrated Care System (ICS) is a way of working across health and care organisations that allows them to work closer together to take collective responsibility for managing resources, delivering care and improving the health and wellbeing of the population they serve.

The ICSs will integrate:

- primary and specialist care
- physical and mental health services
- health and social care.

Across BSW, hospitals, GP surgeries, community care providers, local authorities, a mental health trust, an ambulance trust and voluntary sector organisations have been working together since 2016 as part of the BSW Sustainability and Transformation Partnership (STP).

Working together as the new BSW Partnership, health and care partners will prioritise issues that matter to local communities as well as managing health and care provision during the ongoing Covid-19 pandemic.

The BSW Partnership is also responsible for setting the strategy and goals for improving health and care in the area and overseeing the quality and safety, decision making, governance and financial management of health and care services. It will also provide clinical and professional leadership for the whole area.

For more information, visit [www.bswstp.nhs.uk](http://www.bswstp.nhs.uk).

### **Devizes Integrated Care Centre -update**

The Full Business Case for the Devizes Integrated Care Centre will be discussed at the BSW CCG Governing Body meeting on 21 January 2021.

Construction is scheduled to begin in 2021 with the new building opening in 2022.

### **Trowbridge Integrated Care Centre - update**

The Full Business Case for the Trowbridge Integrated Care Centre will be discussed at the BSW CCG Governing Body meeting on 21 January 2021.

Construction is expected to start towards the end of 2021 with the new building opening in 2023.

### **Medequip retained as provider of community equipment and continence services in Wiltshire**

Following a tender process, Medequip has been awarded a new five year contract with Wiltshire Council and the CCG to manage Community Equipment and Continence Services for Wiltshire, continuing a 15 year working relationship in the region.

Medequip is planning significant innovations and service enhancements to further improve community equipment services provision for the people of Wiltshire. The operational site will remain at Calne and will be totally redesigned and extended, implementing a new layout to facilitate increased capacity, throughput and efficiency.

### **Care in the community - Home First and a new rapid response service**

We have seen a significant increase in referrals to the Home First programme over 2020. Home First is an established joint health and social care pathway delivered by Wiltshire Health and Care and the Local Authority. The service aims to speed up the discharge process from hospital, increasing the number of people who need no additional ongoing care and supporting them to regain their independence.

We have agreed to fund an expansion in the Wiltshire Home First capacity to support the increase in referrals and to increase the community capacity for winter. Recruitment is now underway to employ more support workers and therapists.

In addition to the Home First expansion, we are also going to fund a rapid response service across Wiltshire. The service will provide short-term, responsive and reactive interventions for people whose health suddenly deteriorates at home, making sure

they are safe and getting the support they need at home or in community settings to prevent further escalation or hospital admission.

In addition it can respond to a patient who has attended A&E or been seen by an ambulance crew to prevent emergency admission to hospital by providing care in the community setting. Patients should receive services within two hours in a crisis and a two-day referral for reablement care.

The service will be implemented in a phased approach initially boosting response capability within existing community services. The impact of Phase 1 will be reviewed by June 2020 in order to inform future phases of development.

### **New model for mental health services being developed**

We are finalising a new model for mental health services to deliver at pace revolutionary change to the community provision of support for people over 18 years of age across emotional wellbeing and mental illness.

The proposed new model has been co-created across the system, involving people with lived experience, third sector providers and the local authority, and will be based on a Primary Care Network geographical footprint. A total of £10.3million is available for BSW across three years to support delivery which will include investment in the third sector, primary care, community and secondary mental health provision.

We are currently awaiting approval of our plans and will update you further in coming months.

This page is intentionally left blank

## Healthwatch Wiltshire welcomes four new Board members

Healthwatch Wiltshire has appointed four new Board members to help prioritise the health and social care issues that are most important to the people of Wiltshire.

The Local Leadership Board is the driving force behind our commitment to ensure the voices of children, young people and adults are heard by those who run, plan and regulate health and social care services in the county.

The new Board members join existing members Hazel Dunnett, Andy Mintram, Irene Kohler, Joanna Wittels and Emma Leatherbarrow.

**Gillian Leake** joins us as the new Chair of our Local Leadership Board. She has worked in and around health and social care for 40 years, and will be bringing her knowledge and experience from roles in social work and senior management to Healthwatch.

**Alan Mitchell** is our new Vice Chair. Formerly a civil servant, Alan is now a coach and change management consultant and volunteers for a

number of local and national charities.

**Margaret Winskill** taught food and nutrition and health and social care before becoming a Public Health specialist, leading the Young People Friendly programme and the Health Trainer service in Wiltshire. She is now a diabetes prevention coach and an active member of a refugee community sponsorship group.

**Vijay Manro** has held long careers both as a civil engineer and a local magistrate and now, as a Healthwatch Wiltshire Board member, is looking forward to interacting with local people on health and care issues.

Acting Healthwatch Wiltshire Manager **Julie Brown** said: "We're thrilled to welcome our new Board members. They bring with them an amazing wealth of knowledge, experience and expertise and we're looking forward to developing a new work plan that focuses on what matters most to the people of Wiltshire."

## Share your experiences of services during Covid-19

Healthwatch Wiltshire is looking for feedback from people who have used health, care and community services during the Covid-19 pandemic.

Since March, NHS and social care services have had to change the way they work to meet coronavirus safety guidelines, while voluntary and community groups have stepped up their support to help local people through the pandemic.

We want to understand how these changes

have been working for you, what's been good and what could be better.

**Gillian Leake** said: "As the new Chair of Healthwatch Wiltshire, I'm looking forward to hearing people's stories and helping to ensure their voices are heard by those who plan and run services. Please take five minutes to have your say about how these services are working for you during the pandemic."

[Fill in our survey online](#) or call us to complete over the phone or request a paper copy.

This page is intentionally left blank



# CENSUS 2021

Households across the local authority area of Wiltshire, will soon be asked to take part in Census 2021.

The census is a once-in-a-decade survey that gives us the most accurate estimate of all the people and households in England and Wales. It has been carried out every decade since 1801, with the exception of 1941.

It will be the first run predominantly online, with households receiving a letter with a unique access code, allowing them to complete the questionnaire on their computers, phones or tablets.

“A successful census will ensure everyone from local government to charities can put services and funding in the places where they are most needed,” Iain Bell, deputy national statistician at the Office for National Statistics, said.

“This could mean things like doctors’ surgeries, schools and new transport routes. That’s why it is so important everyone takes part and we have made it easier for people to do so online on any device, with help and paper questionnaires for those that need them.”

Census day will be on March 21, but households across the country will receive letters with online codes allowing them to take part from early March.

The census will include questions about your sex, age, work, health, education, household size and ethnicity. And, for the first time, there will be a question asking people whether they have served in the armed forces, as well as voluntary questions for those aged 16 and over on sexual orientation and gender identity.

Results will be available within 12 months, although personal records will be locked away for 100 years, kept safe for future generations.

For more information, visit [census.gov.uk](https://www.census.gov.uk).

If you need help to promote the census, visit our [Downloadable resources](#) page.



# Wiltshire Council Information Item

**Subject:** COVID-19 update

The infection rate in Wiltshire is continuing to rise, in line with the national trend, which is of concern. It is so very important that everyone across our population, no matter what age, is sticking to the regulations, staying at home wherever possible and protecting their families, friends and communities.

The new variant is much more transmissible and that is demonstrated by the large increase of cases. It is crucial that everyone adheres to the latest rules and advice, which means:

- socially distancing if you have to leave your house,
- not meeting up with anyone that's not in your household or in a childcare or support bubble unless it is one other person for your daily exercise,
- keep washing hands regularly,
- wearing a face covering when required,
- booking a test as soon as you develop any COVID-19 symptoms,
- and self-isolating where required

A big part of helping to contain the spread of the virus is an effective test and trace system. If the NHS are unable to contact a positive case as part of the test and trace service, they will pass the details onto the local public health team. If you receive a call from 0300 456 0100 then please pick up, as that will likely be the team looking to reach you. Please save that number in your phone under 'test and trace' as it's vital you don't miss any calls.

The Wiltshire Wellbeing Hub remains in place for those people who may need additional support, particularly people identified as clinically extremely vulnerable. You can contact the Wellbeing Hub by telephone or email:

- Tel number: 0300 0034576
- Email: [wellbeinghub@wiltshire.gov.uk](mailto:wellbeinghub@wiltshire.gov.uk)

The hub is open Monday to Friday from 9am to 5pm and on Saturday between 10am-4pm.

Wiltshire Council has a series of schemes to support businesses during the Coronavirus restrictions. For further information and advice please visit : [www.wiltshire.gov.uk/business-advice-support-covid19-grants](http://www.wiltshire.gov.uk/business-advice-support-covid19-grants) or email: [covid-19businesssupport@wiltshire.gov.uk](mailto:covid-19businesssupport@wiltshire.gov.uk)

For all the latest updates on Wiltshire Council services and support please visit: <https://www.wiltshire.gov.uk/public-health-coronavirus>

Vaccinations programmes are underway and the request from the NHS is to not contact the NHS to ask for the vaccine as they will contact you . If you are offered a vaccine appointment, please do attend.

For the latest GOV.UK updates and advice on the new national lockdown please visit: [www.gov.uk/guidance/national-lockdown-stay-at-home#high-alert](http://www.gov.uk/guidance/national-lockdown-stay-at-home#high-alert)

This page is intentionally left blank

## Wiltshire Council Information Item

<b>Subject:</b>	Wiltshire Local Plan review consultation
<b>Web contact:</b>	<a href="https://www.wiltshire.gov.uk/news/sign-up-to-online-events-and-have-your-say-about-where-future-developments-should-take-place-in-wiltshire">https://www.wiltshire.gov.uk/news/sign-up-to-online-events-and-have-your-say-about-where-future-developments-should-take-place-in-wiltshire</a>

Consultations on both the Wiltshire Local Plan review and the scope and content of the proposed Gypsies and Travellers Development Plan Document will begin on Wednesday 13 January and run until Tuesday 9 March 2021.

Information on both consultations, including how to comment will be available for the start of the consultation period via the links on the council's planning policy webpages:

<http://www.wiltshire.gov.uk/planning-policy-local-plan-review-consultation> and <http://wiltshire.gov.uk/planning-gypsy-travellers>.

Comments can be submitted in the following ways:

- Online via the above links;
- By email to: [spatialplanningpolicy@wiltshire.gov.uk](mailto:spatialplanningpolicy@wiltshire.gov.uk); and
- Post to: Spatial Planning, Economic Development and Planning, Wiltshire Council, County Hall, Trowbridge, BA14 8JQ.

Should people wish to speak to a planning policy officer about the consultations they can call the council on 0300 456 0100.

### Consultation to inform the Wiltshire Local Plan review

Wiltshire Council has to allocate sufficient land to satisfy housing and employment needs up to 2036 in its Local Plan. As such it is seeking the views of local communities and stakeholders to see if the suggested distribution of numbers across the county is correct, as well as which of the proposed sites are most suitable at the county's principal settlements and market towns.

The consultation also invites comments on a planning framework for rural areas to support neighbourhood planning and to address local housing needs, and provides the opportunity to comment on how the council's planning policies can be shaped to address climate change.

Feedback during this review consultation will help to shape the draft Local Plan, which will then be produced, and people will be given another opportunity to take part in a further consultation in late 2021.

As COVID restrictions mean that face-to-face events will not be possible during this consultation, the council is holding a series of online events for people to find out more about what the Local Plan consultation involves and how to comment.

## ***Wiltshire Council Information Item***

Each event relates to a particular settlement, and there are also two events for rural areas, which include all other Wiltshire villages and settlements that are not covered in the other 15 events.

### Gypsies and Travellers Plan

Comments are sought on the proposed scope and content of the Gypsies and Travellers plan. In line with Government planning policy and legislation, the plan will look to allocate land for travellers in sustainable locations to meet their permanent and temporary accommodation needs up until 2036.

This consultation will help to shape a draft plan, which the council will then prepare and consult on autumn 2021.

### Online Events

The online events, which will be held from 7pm-8pm on the dates shown are as follows:

- Planning for Calne, Monday 18 January
- Planning for Corsham, Tuesday 19 January
- Planning for Royal Wootton Bassett, Tuesday 19 January
- Planning for Chippenham, Wednesday 20 January
- Planning for Tidworth and Ludgershall, Wednesday 20 January
- Planning for Malmesbury, Thursday 21 January
- Planning for Amesbury, Thursday 21 January
- Planning for Marlborough, Monday 25 January
- Planning for Bradford on Avon, Monday 25 January
- Planning for Westbury, Tuesday 26 January
- Planning for Salisbury, Tuesday 26 January
- Planning for Devizes, Wednesday 27 January
- Planning for Trowbridge, Wednesday 27 January
- Planning for Melksham, Thursday 28 January
- Planning for Warminster, Thursday 28 January
- Planning for rural areas, Monday 1 February and Tuesday 2 February

People can sign up for the events in advance via [this link](#), or by contacting the council via email ([spatailplanningpolicy@wiltshire.gov.uk](mailto:spatailplanningpolicy@wiltshire.gov.uk)), or phone (0300 456 0100).



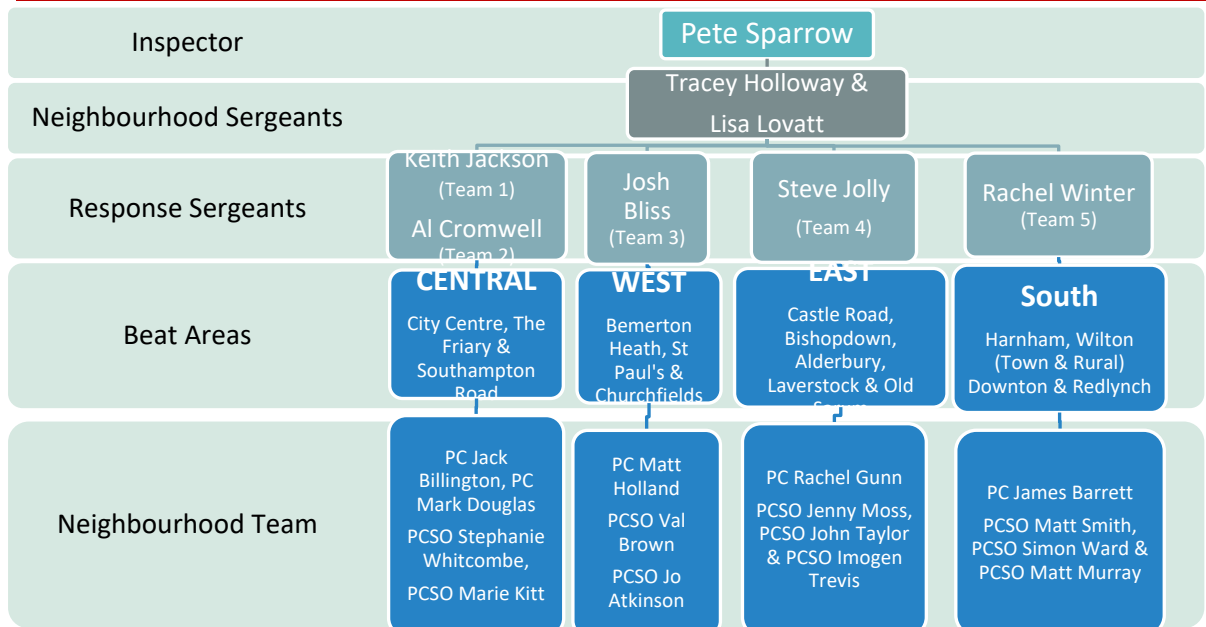
## Key Updates

The most significant update since my last report must focus on COVID-19. Lockdown 2 has led into Lockdown 3 as we witness cases, hospital admissions and deaths sadly rising rapidly. No longer are we looking for evidence of the existence of this pandemic as many of us will now have either seen the effects personally or with friends and family. The tragic sudden death of a 36 year of fit male isolating in Salisbury with his brother must serve as a reminder of the dangers of this virus and the need to take this seriously.

This Lockdown has a key message for everyone to 'treat it as though you have it' as the Policing tone changes from Engage, Explain and Encourage towards Enforcement. As I write this, I see reports of parking chaos within our rural community. The direction is to Stay Local. The preference is to walk from your home. This is not always possible, but if you must drive to a local area, common sense must apply where several others have already parked there. Many locations have closed their car parks. That does not mean that you should then park in front of gates – farmers must still have access to their land with their large vehicles.

Not wearing face masks, unnecessary travel or allowing people into your home; it all amounts to additional demand on your Police Service who would prefer to be proactively fighting crime in the more traditional sense. My plea to you is to put effort into following the guidance and not into ways to flex the guidance. What you consider to be acceptable as an excuse to break or bend the rules causes anxiety to others and now is the time to be united. Please Stay Home wherever possible.

## Salisbury CPT Structure



The new Salisbury CPT Beat Areas have now been established building better joined up working between the Neighbourhood and Response Teams. Each Response Team has been aligned to a Beat Area to encourage ownership and better Problem-Solving with anticipated increased community visibility and engagement encouraged.

# SALISBURY COMMUNITY POLICING TEAM REPORT

JANUARY 2021



## Changes in personnel:

Sgt Lisa Lovatt returns to her Neighbourhood Role with Sgt Steve Jolly returning to leading Team 4 Response. Sgt Rachel Winter has joined Salisbury CPT from the Staff Office to the Assistant Chief Constable.

4 new Student Constables have arrived and are being tutored on Response Teams (PCs Jennie Howells, Hannah Cranham, James Howells & Ben Taylor) with 3 new PCSO (Marie Kitt, Imogen Trevis and Stephanie Whitcombe) joining our Neighbourhood Team. We also see PCSO Simon Nash, LCI Lucy Thompson and Escort Officer Will Hammond leave to start their training as Student Constables – we hope to see them again later this year!

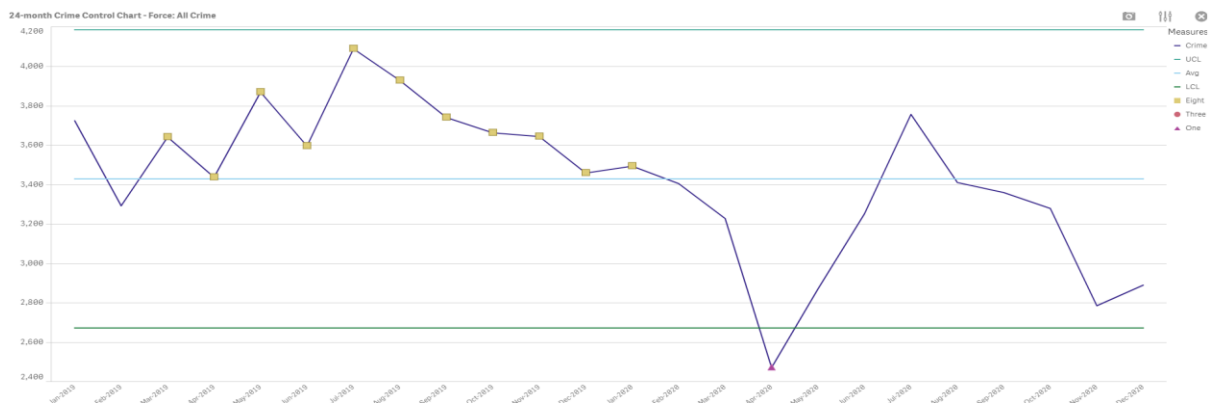
With the uplift in PCSO numbers and following a review of demand, I have increased the PCSO numbers in both East and South areas, which we anticipate will help improve some of the visibility issues, particularly whilst we are managing our response to the Pandemic.

## Exception Reporting (Crime Trends)

This is an opportunity to understand crime trends over a 2-year period. This reporting method helps to assess crime trends based on seasonal trends and can assist identifying emerging trends. The central blue line is the 2-year average with the green lines representing the Upper and Lower Control Limits. For the statistically minded the One/Three/Eight markers are where we have consecutive data points that are above or below 1 standard deviation from the mean.

## Wiltshire Police:

This chart is provided as a base line to provide context to the performance of Salisbury CPT. It is worth comment on the impact Lockdown 1 & 2 have had upon crime figures. Also of note is that there are seasonal trends where crime is generally highest during the Summer and the Christmas/New Year period. The wider impact of Covid on these charts will have seen that central blue line average lower making the darker blue crime line appear higher. I hope this openness will provide some clarity over perception.





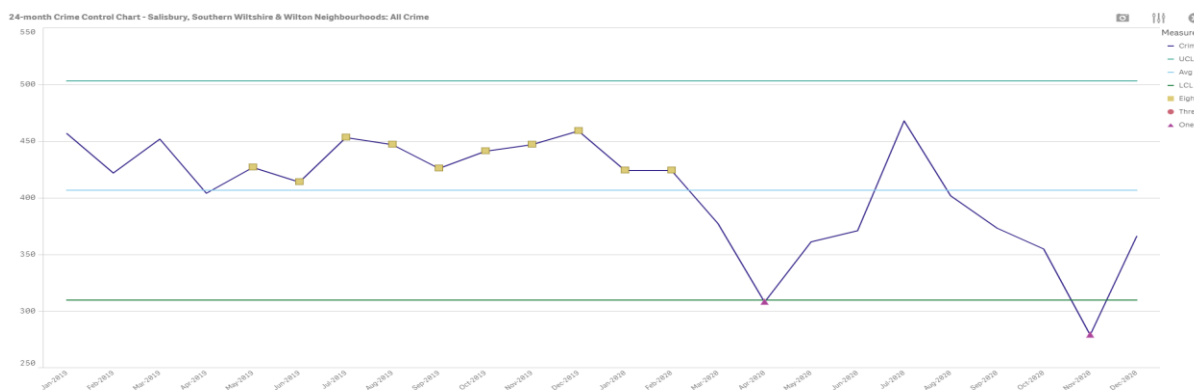
# SALISBURY COMMUNITY POLICING TEAM REPORT

JANUARY 2021

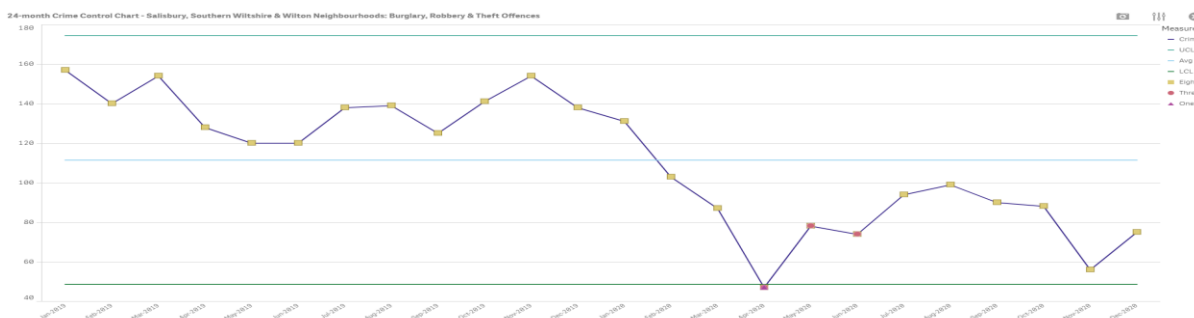


## Salisbury CPT:

There are clear comparators between the first 2 charts (Salisbury and Wiltshire), particularly the impact of the Covid Lockdown. The two aspects I will highlight is that Salisbury was the pilot area for Problem Solving during the Summer of 2019 which correlates to the seasonal flattening of demand in the Salisbury area. Although the demands of Crime reporting may have declined during 2020 during the Lockdown periods, our staff remained busy responding to new and changing Covid legislation and guidance. In addition, and continuing to use our performance tools, we continue to promote a Problem-Solving approach to focus on harm, threat and risk to reduce demand. This may account for the improved performance during Lockdown 2 where Salisbury recorded a lower amount of crime than during Lockdown 1.



Acquisitive crime (Burglary, Robbery and Theft Offences) has seen a marked decrease in reporting (burglary in the East and South areas explored later). Closure of shops and more people at home has certainly impacted, but also the proactive efforts of officers to disrupt know criminals operating in our area, based on intelligence, has seen positive results.



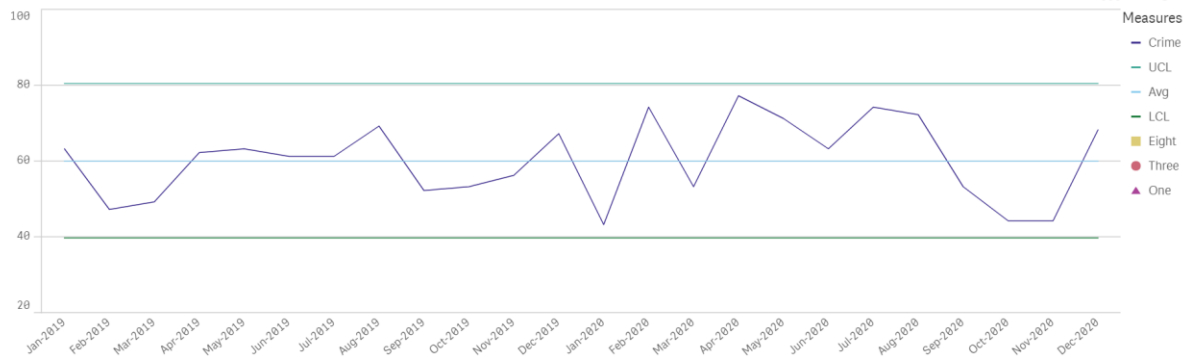
Violent Crime reports have also been impacted by Covid. We focus on Safeguarding the Vulnerable, particularly repeat Domestic Abuse victims and there have been reminders that you should not stay home during Lockdown if it is not safe to do so. December saw a sharp rise in of Domestic Abuse reports (below), which is mirrored elsewhere and will explored further to understand any lost opportunities.

# SALISBURY COMMUNITY POLICING TEAM REPORT

JANUARY 2021



24-month Crime Control Chart - Salisbury, Southern Wiltshire & Wilton Neighbourhood: All Crime

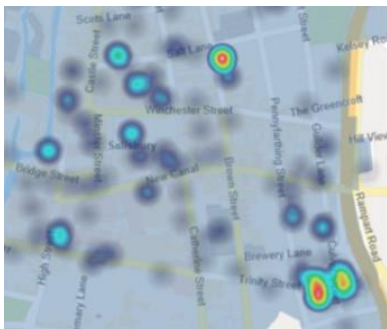


## Central (City Centre, The Friary and Southampton Road):

24-month Crime Control Chart - City Centre & Friary & Southampton Rd Beats: All Crime



There has been significant focus over the last 6 months on the demand created around Culver Street Car Park, Paynes Hill and Barnard Street resulting in a partnership problem-solving approach being adopted. This reviewed local policies, patrol strategies and best practice from other areas. Funding was secured from Salisbury City Council and the Police Crime Commissioner to move 2 CCTV cameras to key locations, which has assisted in identifying offenders and radio links to CCTV see faster response to ongoing concerns. The below heat maps quickly identified the location of demand. The first map demonstrates calls to the Police for the 3-month period of April-July 2020, whereas the second October to January 2021. The demand reduced significantly to acceptable levels following this work and the demand is now better spread across the City. We will continue to focus our efforts on hot-spots and hope that this again demonstrates the systems available to support officers. Much of this work goes unseen or unreported but benefits communities.

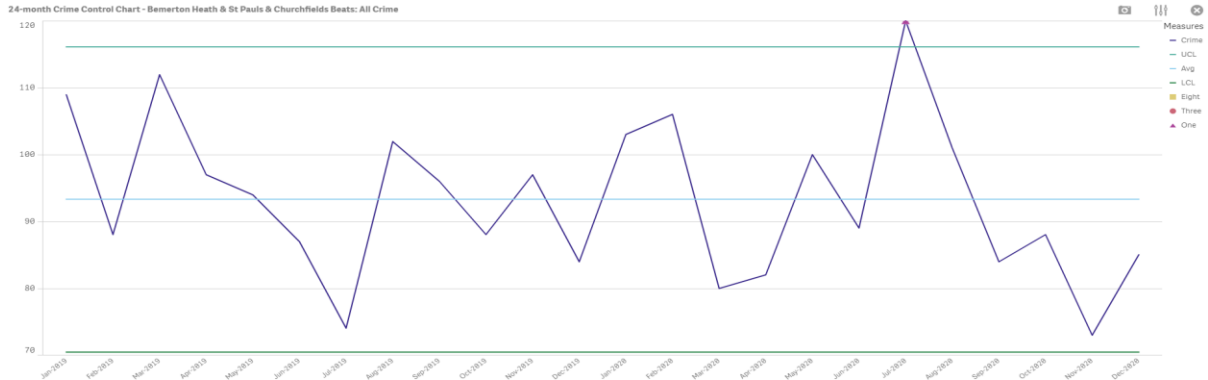


# SALISBURY COMMUNITY POLICING TEAM REPORT

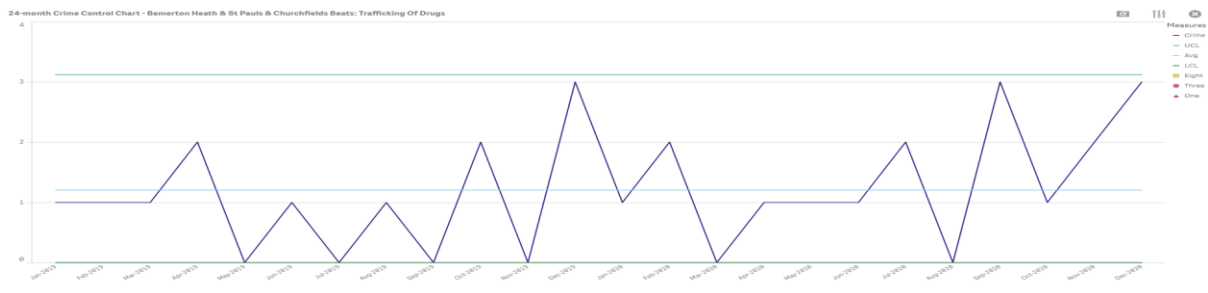
JANUARY 2021



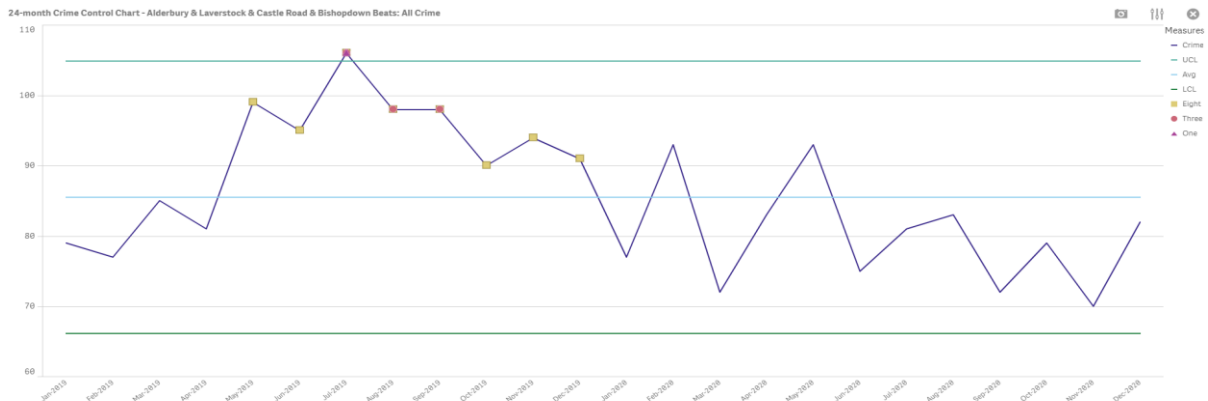
## West (Bemerton Heath, St Pauls & Churchfields):



The All Crime 2 year high during the Summer focused on Domestic Abuse cases following Lockdown 1. Since then there has been a fall in offences. There are no 'Exceptions' to crime reporting, although violent crime continues to be monitored (now back below average). We note that there is an increase in the area of trafficking of drugs. This might alarm some, but I believe it is a positive aspect of proactive rather than reactive policing. It also highlights how small numbers can influence such charts. Although we can't speak of many of these cases under investigation, I can say that they are often based on community intelligence and wish to encourage the public to continue to report suspicious activity to help direct future efforts.



## East (Alderbury, Laverstock, Castle Road & Bishopdown):



# SALISBURY

## COMMUNITY POLICING TEAM REPORT

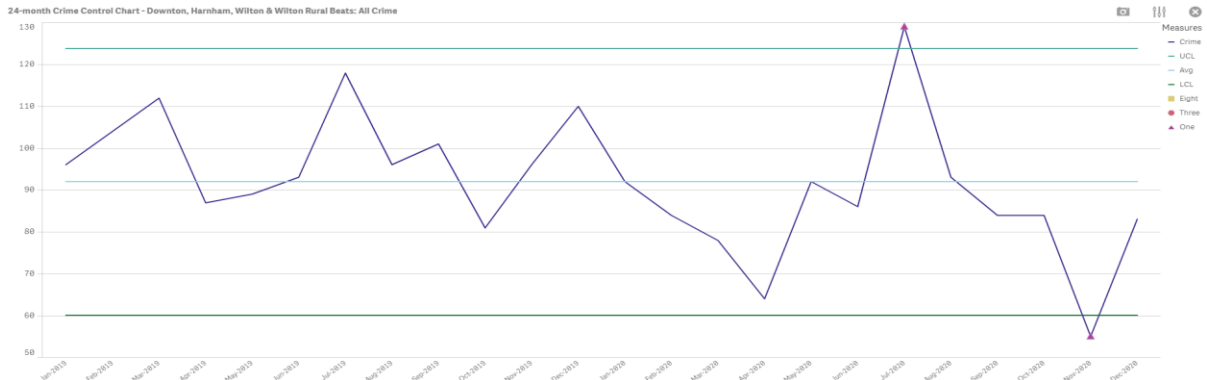
JANUARY 2021



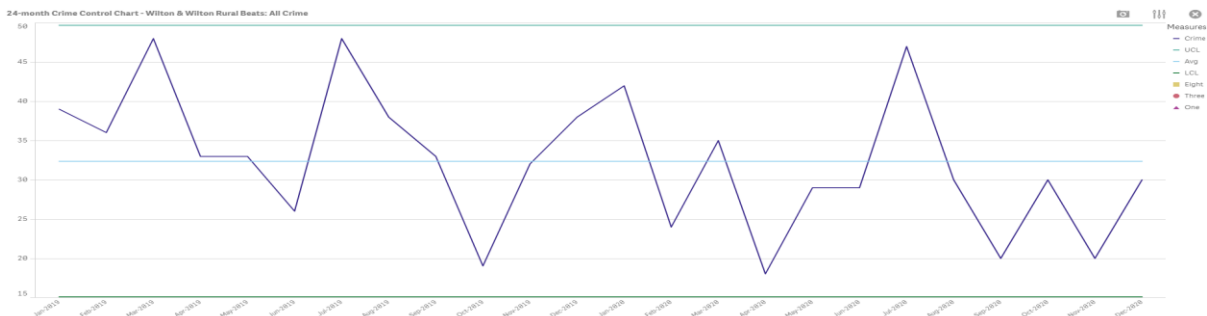
The East area continues to see the fall in crime trend. There are no statistical exceptions but do note there has been lots of debate on social media regarding a recent increase in burglaries. Looking at this as a 2-year profile there has been a short-term rise to being above average and above seasonal expectations. This is being investigated by our Neighbourhood Team with the support of CID and has been a factor in moving a PCSO to this area. We have increased our rural patrols and we continue sharing intelligence with Hampshire and Dorset Police as note that this increase is also seen in the South area.



### South:



This is a very large area which crosses over 3 Area Boards and although we staff the area as a whole, it is helpful to break it down further. The consistent theme remains that we remain below average crime in all areas, but there are no statistical exceptions identified.



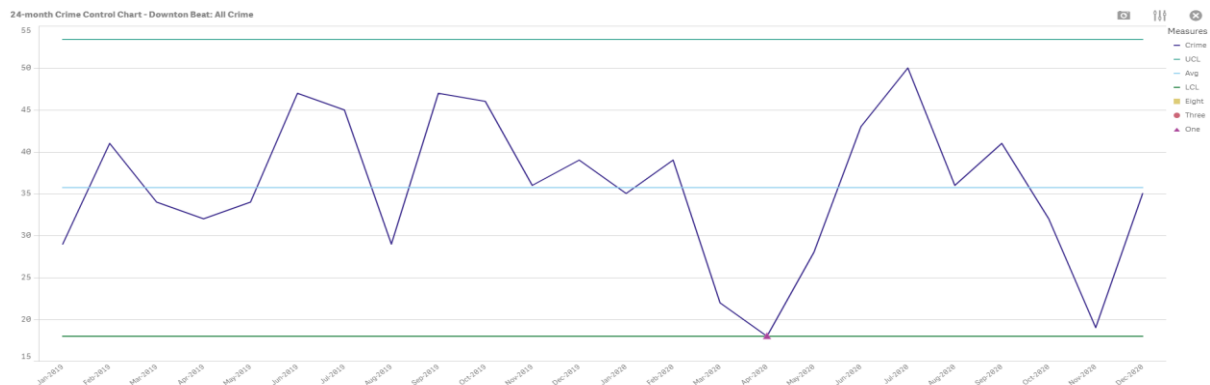
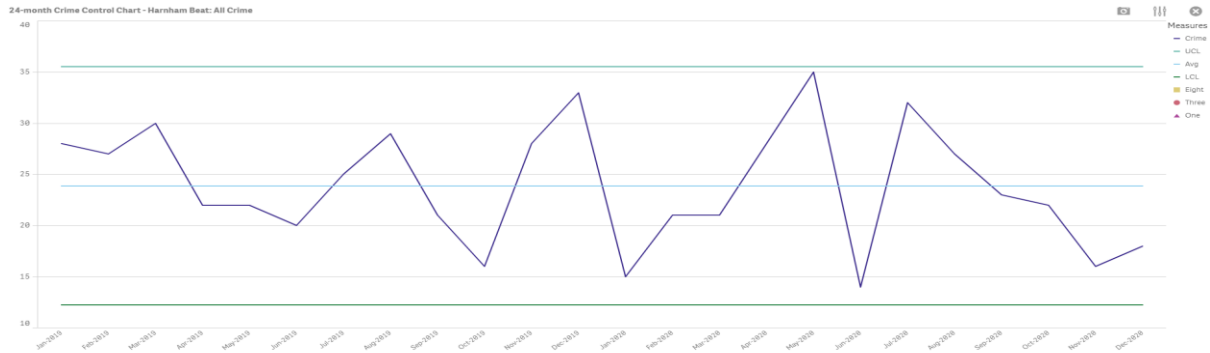
# SALISBURY

## COMMUNITY POLICING TEAM REPORT

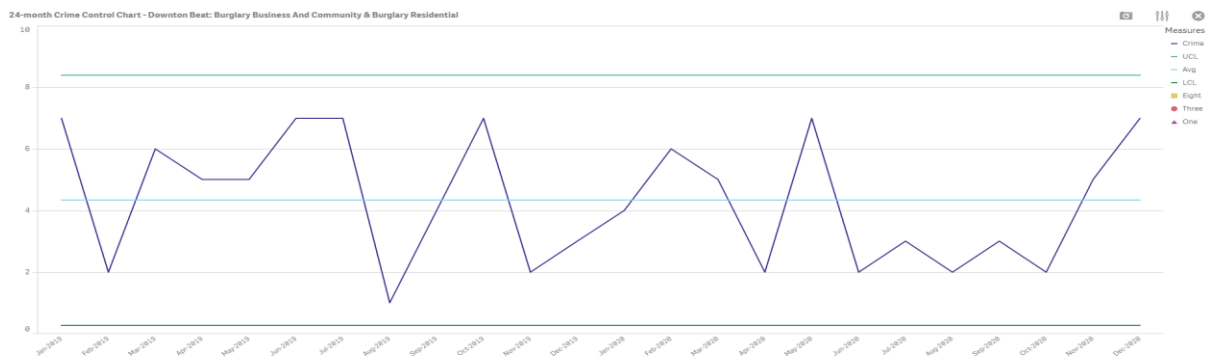
JANUARY 2021



Wilton (above), Harnham (below) and Downton (2 below) remain low crime areas with below average reports and no identified areas or patterns to focus on. It is worth remembering that that smaller the sample the more distorted the image can become.



Although there are no 'exceptions' the Downton area, (which includes Redlynch and parts of the New Forest) it has seen a recent rise in burglaries. This is a factor in moving a PCSO across from the City Centre to the South Area and will help increase visibility. We are working closely with our colleagues in Hampshire and Dorset with our investigation of these offences, which also appear in the East area. This has become a priority and we have increased our patrols of the area to help deter offending.



SALISBURY  
COMMUNITY POLICING TEAM REPORT

JANUARY 2021



**Priorities – Some of what are we doing to keep you safe?**

AREA	PRIORITY	UPDATE
All Areas	COVID 19 Patrols	Engage, Explain, Encourage & Enforce the regulations. On one visit 5 people were located at the rear of a property trying to avoid the Police. All were issued notices and sent home to addresses in Salisbury and Southampton. Police will respond when possible to reports of breaches of the regulations and have allocated staff to this role each day to proactively patrol populated areas based on intelligence to encourage social distancing, the wearing of masks and to discourage unnecessary travel away from the home.
Central	Barnard Street / Paynes Hill / Culver Street Car Park	A Problem-Solving approach with key stakeholder participation has assisted in the reduction of reports to this area. The Closure Order obtained on a private premise in Barnard Street has been effective and has assisted in the reduction of the reports. A similar Partnership Problem Solving approach identified ways to improve Culver Street Car Park in order to address Anti-Social Behaviour (noise from skateboarders and car enthusiasts) as well as rough sleeping and drug use. Sadly, the necessary funding for this project came from the People Friendly Streets fund that has now been reallocated.
	Demand Reduction	In a similar approach to the issues around Barnard Street, Neighbourhood Officers with Wiltshire Council are now focusing on working with John Baker House in identifying ways we can work better together to reduce demand from the location. This is the often-unseen work that can have the greatest impact. In addition to locations we are looking at who is creating the most demand as individuals and looking to find ways that we can prevent or reduce the need for repeat visits. This is considered in a holistic approach and not just from an enforcement angle.
	Street Drinkers and the Maltings	Ongoing effort to work with the City Security Officers in addressing the street drinking issues. A Partnership approach is reviewing how we are recording and tackling ASB with the Street Drinking issues a focal point of the discussions. Many of these issues are not specifically Police matters, but the resulting behaviour can be and so it is important that we all work together to improve this problem.
	Youth ASB	This was an issue in the during the Summer; however, the arrest of two particular individuals and strict bail conditions has resulted in a significant reduction on our demand. This priority will be closed

# SALISBURY

## COMMUNITY POLICING TEAM REPORT

JANUARY 2021



<b>West</b>	Demand reduction for shoplifting	An increase in reports of theft offences and ASB related matters in the area of Wilton Road. Officers are patrolling the area to reduce the demand and deal with offences. These patrols include regular visits to the garages and shops.
	ASB - Lower Road, Lower Bemerton and around St John's Primary School	Report of 4 males in a car seen to be exchanging money resulted in 4 males and a quantity of cannabis located. One has been cautioned and another summonsed to court.
	Catapult offences around Westwood Road	Regular patrols to deter further offences. We would welcome some intelligence to help progress this matter.
	Drugs	Intelligence gathering and patrols in order to address the issues around drug supply and use. This also includes opportunities to engage and safeguard vulnerable youths susceptible to being drawn into County Lines issues.
<b>East</b>	Vulnerability Patrols	Officers conduct regular visits to our identified vulnerable people in an effort to both reassure them following reported concerns and also to deter visits by criminals who wish to exploit them. One such address resulted in quickly identifying members of an Organised Crime Group who were stopped for burglary and fraud offences and they are now on remand awaiting trial.
	ASB	Concerns over noise ASB in the Car Park under Aldi resulted in 3 adults receiving fixed penalty notices for Covid-19 offences with one of them also reported for careless driving after being seen burning doughnuts in their car.
	Burglary	Focus on patrols in both marked and unmarked cars in both the East and South area. 2x 14-year-old youths were arrested for burglary of Leehurst Swan School after responding to reports of noise on the roof and the CCTV cameras being moved. A search located one youth and the second was detained at their home address.
<b>South</b>	ASB and Safeguarding in Downton	Wiltshire Council, Youth Offending Team and the Neighbourhood Policing Team continue to focus their collective efforts on the safeguarding issues identified by the community. Having used Community Protection Warnings, Community Protection Notices and Closure Orders the team have now taken the step to gain a civil injunction on an adult female, identified as the root cause of the concerns. This order prevents her from: (i) Engaging in, threatening to engage in or inciting or allowing others to engage in conduct causing or capable of causing a nuisance or annoyance to any person located within the areas of Roman Meadow and Moot Lane, Downton, Salisbury.

**SALISBURY**  
**COMMUNITY POLICING TEAM REPORT**

JANUARY 2021



		<p>(ii) Engaging in, threatening to engage in or allowing others to engage in conduct causing or capable of causing alarm, harassment or distress to any person located with the areas of Roman Meadow and Moot Lane, Downton, Salisbury.</p> <p>(iii) Using, threatening to use or inciting others to use violent behaviour towards any person located within the areas of Roman Meadow and Moot Lane, Downton, Salisbury.</p> <p>(iv) Allow drug use in or around Roman Meadow and Moot Lane, Downton, Salisbury.</p> <p>(v) Associating with any persons under the age of 18 years of age, save for those family members identified in the injunction.</p> <p>(vi) Contacting either by herself or by encouraging others to do so an individual stated in the injunction.</p> <p>The court issued a power of arrest to this injunction, meaning that if she is found to have breached clause (iii) she can be arrested.</p> <p>The injunction is valid until August 26, 2022.</p> <p>Please continue to report concerns as we are keen to progress this priority with appropriate intervention where required.</p>
	Speeding Vehicles	Community Speed Watch (CSW) have sadly been suspended during the Lockdown period. Staff are being encouraged to conduct speed checks where possible, some of which are highlighted on Social Media.
	Rural Crime inc. Hare Coursing, Fly-Tipping & Theft offences	Visibility in the rural areas is vital. Fly-tipping is a concern and we have conducted joint operations with Wiltshire Council and Trading Standards surrounding waste carriage licenses.
	Burglary Series	We have an Organised Crime Group living within this area and across Hampshire and Dorset. Staff are disrupting their activity whenever possible.

**Highlights around Salisbury**

**Double Murder**

Marcin Zdun, aged 40, was found guilty at Winchester Crown Court of murdering his 40-year-old wife Aneta Zdun and their 18-year-old daughter Nikoleta at their home in Wessex Road, Salisbury on Monday 1 June 2020. This was a traumatic case for everyone involved, but I wish to pay tribute to the members of the public who witnessed and bravely reacted to the events before them and to the initial officers who attended. Their professionalism was surpassed by their acts of humanity and compassion in those final moments. I know they took great comfort from the fact that there was nothing more they could have done to alter the outcome. Zdun was sentenced to Life Imprisonment with a minimum term of 34 years;



# SALISBURY

## COMMUNITY POLICING TEAM REPORT

JANUARY 2021



a sentence that I hope provides closure to the family, friends and close community of this terrible crime.

### **Officer Bitten**

Mark Archibald, 38, of Salisbury was found guilty of wounding with intent, common assault and assaulting an emergency worker and sentenced to 4 years imprisonment at Bristol Crown Court. The main offence related to biting a young police officer on his arm leaving a wound so severe that required surgery and left permanent scarring. The officer remained professional despite the horrific injury he had just received and remained focused on detaining and calming Archibald on the ground in the middle of Elizabeth Gardens without drawing attention from the families using the park during the Summer. Sadly, this was the officer's last shift for Wiltshire Police as he resigned during his recovery.

### **Catapults**

Mark Day, 33, of Moot Close, Downton, appeared at Gloucester Crown Court and was sentenced to six years and six months imprisonment and fined £170 having pleaded guilty to the following:

- Aggravated taking a vehicle without consent
- Attempted GBH Section 18 on a police officer
- ABH on a police officer

This sentence also took into account a previous assault on 2 Police Officers whilst wearing a knuckle duster and the assault on Police Dog Elvis.

The incident started with a stolen vehicle from Downton and a pursuit that took in parts of Dorset and the New Forest and was recorded by the Police Helicopter. The driving took in speeds in excess of 100mph, a collision with a pony in the New Forest and a foot chase by officers and Police Dog Elvis, where Day fired large metal nuts and stones at close range hitting both officers and dog. One projectile left an officer with a cut to his head, narrowly missing his eye.

The impact of these offences are not just physical and impact on their family and colleagues too. I believe there should be a change in the law restricting the carrying of catapults without a clear lawful purpose. I see far too much crime relates to them.

### **Bus Burglars**

David Clift, 44, from Salisbury and his nephew Josh Clift, 26, from Longhedge, have been sentenced to 2 years and 6 month (David Clift) and 16 months suspended (Josh Clift) for a burglary at Griffin School in Salisbury in September where they stole a safe and the school mini buses.

# SALISBURY

## COMMUNITY POLICING TEAM REPORT

JANUARY 2021



### **Dog Thefts**

Nationally, Dog thefts have been much commented on during the last year as their value has increased. Responding to correspondence and social media it is important to differentiate between perception and reality with this highly emotive crime. We are Not in the middle of a 'dog theft epidemic' in Wiltshire. That is not to say that this offence does not happen or to undermine the impact of such a crime.

From 23<sup>rd</sup> December 2019 to 23<sup>rd</sup> December 2020, Wiltshire Police received just 26 reports that relate to thefts, attempted thefts, and suspicious activity that could be perceived to be a pre-cursor to an attempted theft, of dogs by unknown suspects. Of these 26 reports, 8 of them involved a dog physically being taken, and none of these incidents have any obvious linked patterns to them in terms of suspects, behaviours, breeds of dogs, or locations. 9 of these 26 reports (all suspicious activity) came as a result of a social media release that we made regarding suspicious activity.

What is important is to remain alert and report incident when they happen. This helps us with sharing information to address all sorts of criminal activity.

### **Poachers**

Patrols by Amebury CPT on Salisbury Plain tried to stop a Jeep Cherokee, which failed to stop driving off across country with no lights. Salisbury officers located the vehicle entering Salisbury on the A338 and deployed a 'Stinger' tyre deflator device to stop the car safely.

Five people were arrested for failing to stop for Police, poaching and no insurance with the dogs, equipment and car seized. Wiltshire is a rural county and we will take every opportunity to pursue people who come here to commit offences.

I apologies for a very lengthy report, but I hope I provide you with detail and a flavour of a small percentage of what your Community Policing Team are doing on a daily basis to keep you safe.

Insp Pete Sparrow

Salisbury Community Policing Team



## **Salisbury City Council Update for Salisbury Area Board – Thu 21 Jan 2021**

### **Cllr Liz Sirman, Leader of Salisbury City Council**

Following the government's announcement on Monday 4 January, the Council is committed to operating Business as Usual within the restrictions of government guidance. We continue to monitor all government advice with regard to the Coronavirus, and we are assessing its impact on the Council services, our residents and our staff team.

### **CV 19 Update**

Salisbury Information Centre is closed during the National Lockdown but we are still working answering the Council phones and e-mails. Salisbury Shopmobility as an essential service is operating by appointment only.

Full Council and Committee meetings are now being held remotely via Team until further notice – please see our website for details.

Salisbury Guildhall will close its front door to unrestricted visitors – visitors are directed to ring or email the City Council on 01722 342860 if urgent. This is to support the government's measures to promote social distancing and limit our staff's contact with visitors.

The Charter Market is operating on a Tuesday and Saturday as normal to give residents access to essential items in a safe outdoor shopping experience. This will include food items, pet food, hardware and plants.

The Crematorium is operating as usual with some restrictions for services in line with current social distance policies. Please phone the Crematorium if you have any queries about a service taking place.

Public toilets are open as normal, subject to the availability of staff to clean and operate them,

CCTV is still operational and manned by our trained operators including our valued volunteers. The service is being operated in a covid secure manner.

We continue to work with Wessex Community Action to offer a Community Support Scheme for resident in need of assistance.

## **Other Updates**

The Council has set its budget for 2021 -2022 at its Full Council Meeting on Mon 18 Jan 2021 and full details are available on our website.

The Salisbury City Community Lottery was also virtually launched this week to local community groups – this launch was well attended and I am excited by the new venture which offers support to local groups working in our community.

Before Christmas an exercise was conducted to test aspects of the Salisbury Flood Plan. This exercise, led by Colin Froude, one of the three Deputy Flood Coordinators, was very useful and highlighted where the plan was effective and where improvements should be made. We are still keen to recruit further volunteer flood wardens for the city – if you are interested please contact the City Council via [flooding@salisburycitycouncil.gov.uk](mailto:flooding@salisburycitycouncil.gov.uk)

The City Council was delighted to see the announcement of an award of approx. £9M for the city as part of the Future High Street Fund scheme. The City Council is looking forward to working closely with Wiltshire Council to deliver the improvements to the city that this funding will bring.

And finally, I would like to thank my fellow councillors and all the staff at the City Council for all their commitment during the difficult year that was 2020 and I look forward to working with them in 2021.

### **Cllr Liz Sirman**

Leader of Salisbury City Council  
12 Jan 2021

## Salisbury River Park: Masterplan and draft proposals for Phase 1 development

### High level summary of public consultation, Nov 2020 – Jan 2021

The Salisbury River Park project is a collaborative project between Wiltshire Council and the Environment Agency to deliver flood risk alleviation, environmental improvements and public realm enhancements around the River Avon through central Salisbury.

The vision for the River Park is to deliver a legacy of riverside green space and urban wildlife habitat for the people of Salisbury and its visitors to enjoy well into the future. The River Park will better connect the linear riverside route from the Ashley Road Open Space towards Elizabeth Gardens, north to south through the centre of Salisbury along the margins of the River Avon. It will enhance the setting and quality of the river while delivering essential flood risk mitigation to protect existing and future residents and businesses, building resilience to the effects of climate change. Delivery of the Salisbury River Park project forms one of the central pillars of the Salisbury Central Area Framework (CAF), which presents a series of recommendations to help the city recover from the 2018 nerve agent attacks and the 2020 Covid-19 pandemic. The Salisbury CAF was endorsed by Wiltshire Council in August 2020, with the support of partner organisations including Salisbury City Council, the MP for Salisbury, and Salisbury Business Improvement District (BID).

The River Park is separate from, but nonetheless linked to Wiltshire Council's strategic objective to redevelop Salisbury's central car park as part of the Maltings and Central Car Park (MCCP) strategic allocation set by the Wiltshire Core Strategy. A masterplan for the Maltings and Central Car Park was endorsed by the council in June 2019, which included a requirement to deliver flood risk alleviation and biodiversity.

The Salisbury River Park proposals were the subject of public consultation that took place between Thursday 19<sup>th</sup> November 2020 and Friday 8<sup>th</sup> January 2021.

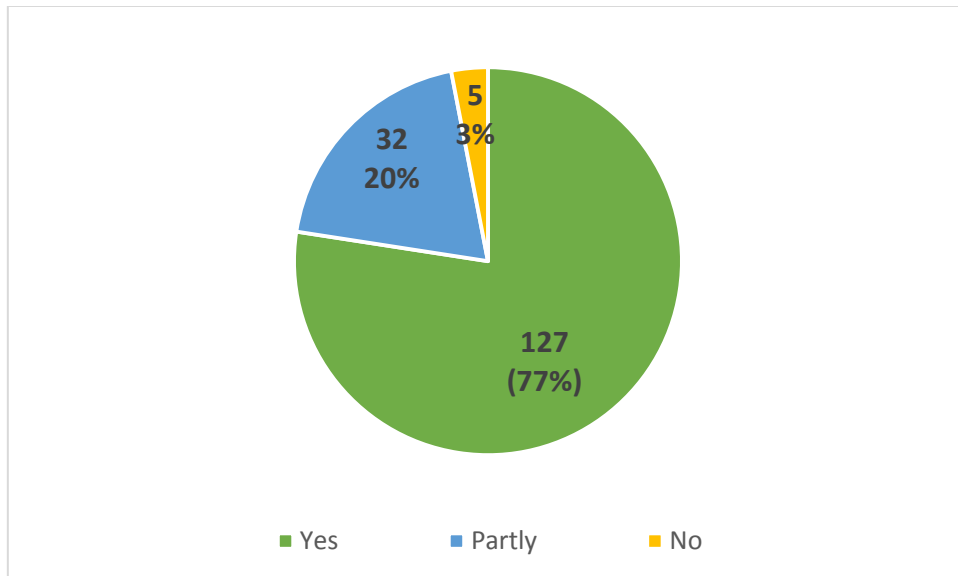
The consultation was split into two parts:

- Part 1: asked for feedback on the draft Salisbury River Park Masterplan, which sets the guiding principles for the development of the whole of the River Park, to be delivered over a number of phases.
- Part 2 asked for feedback on the Environment Agency's draft detailed proposals for Phase 1 of the River Park that will form part of a planning application in 2021.

Over the consultation period, **184 responses** to the Salisbury River Park consultation were received. Officers are now in the process of analysing these responses.

**High level summary of results received in relation to Salisbury River Park Masterplan:**

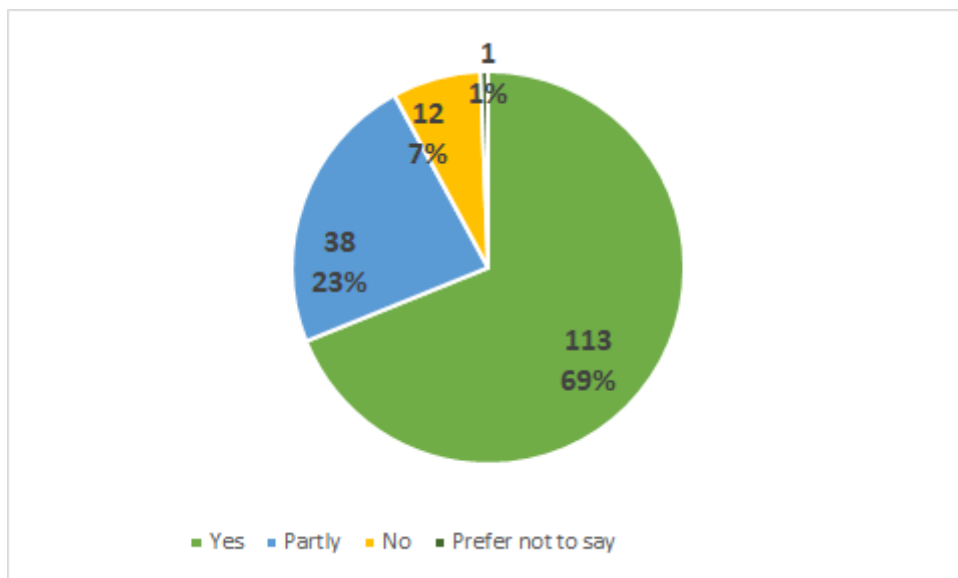
Of those that answered Questionnaire question 1, “Overall, do you support the proposals that are set out in the Salisbury River Park Masterplan?”, the results were as follows:



A summary of the written feedback that was received will be presented and responded to as part of a Consultation Report to be prepared by officers at Wiltshire Council.

**High level summary of results so far received in relation to EA Phase 1 proposals for CCP/coach park:**

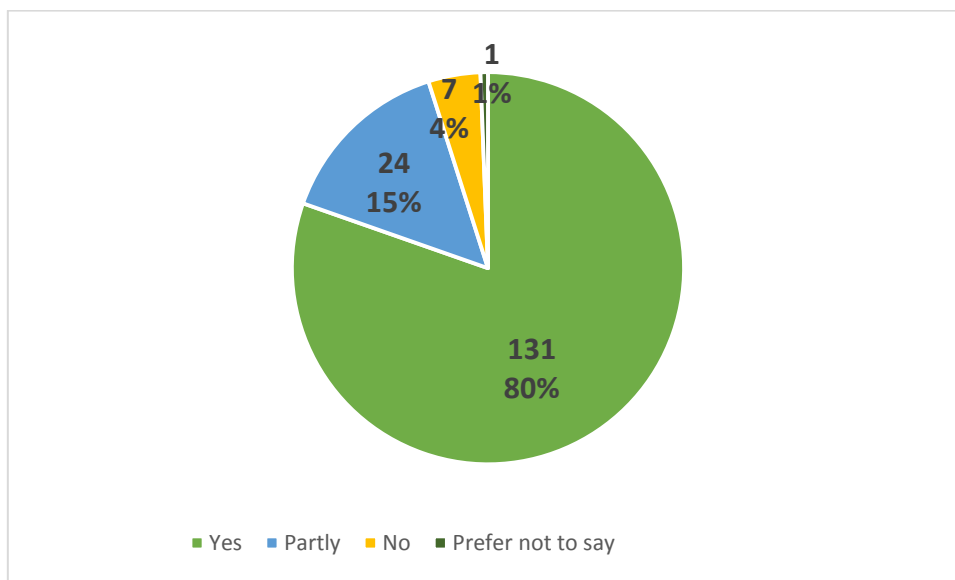
Of those that answered Questionnaire question 6, “Do you support the Environment Agency’s draft proposals for the River Park at the central car park and coach park?”, the results were as follows:



A summary of the written feedback that was received is expected to be presented and responded to as part of a Statement of Consultation Report to be prepared by the Environment Agency.

**High level summary of results so far received in relation to EA Phase 1 proposals for Fisherton Rec/ Ashley Road Open Space:**

Of those that answered Questionnaire question 13, “Do you support the Environment Agency’s draft proposals for the River Park at Ashley Road Open Space and Fisherton Recreation Ground?”, the results were as follows:



A summary of the written feedback that was received is expected to be presented and responded to as part of a Statement of Consultation Report to be prepared by the Environment Agency.

**Next steps:**

Officers in Wiltshire Council’s Major Projects team are currently in the process of analysing the responses that were received that relate to Part 1: the Salisbury River Park masterplan. A full summary, including responses to each of the points of feedback that were raised, will be presented as part of a Consultation Report. This report will be presented to the council’s Strategic Planning Committee alongside a revised version of the Salisbury River Park Masterplan for endorsement, which is expected to be in June 2021, alongside the Phase 1 planning application.

The Environment Agency will be using the responses received relating to the Part 2: Phase 1 proposal to inform the final designs for the Phase 1 proposals. It is expected that a full summary and responses will be presented in a Statement of Community Involvement to accompany the forthcoming planning application.

This page is intentionally left blank



**SaSS UPDATE**  
**January 2021**

1. The SaSS e mailed Newsletter is now up to Edition 23, circulating by e mail to around 250 people/organisations
2. The new Steering Group is finding its feet and working well together
3. Linda Baker is providing excellent admin support
4. SaSS has begun working towards charitable status
5. Work is going to develop a communications strategy and commission a website, led by Liz Batten
6. We have been supporting our Older People's and Carers' Champions, Irene Kohler and Helen Dowse, in their great work in distributing much appreciated treats to isolated older people and carers.
7. Irene with the Silver Salisbury Group is still planning to offer a seminar on Financial Abuse of Elders when that is possible and the group will shortly be reviewing what might be possible for a silver Salisbury programme around 1<sup>st</sup> October.
8. Helen as Carers Champion is planning to arrange some training events for Carers through the year, which may have to be virtual and is applying for funding from for this.
9. The Digital inclusion project led by Jane Ebel is going great guns, having received a second Community Foundation grant to extend the work.
10. The Hidden Figures street art project is also progressing well with the first figure having been scanned and the 3 D printer ordered. You may have seen the display about it in the window of 59 Catherine Street.
11. The Carers Showcase originally planned for March 2020 is on ice for the present – we will get back to it as soon as possible.
12. The Salisbury Covid Stories, produced with the help of a Community Area Board grant, has been generally well received: we see it as forming part of an important record of the extraordinary events of the pandemic.
13. There is a small amount of funding in place to refresh the Safe Places scheme.
14. We are aware of the need for work on two major areas, dementia and mental health and discussions are going on at present.
15. Addressing the need to find funding to continue to provide admin support to SaSS when the present Lottery Funding runs out in the autumn of £2021 is our number one priority.
16. Finance: Current balance in the SaSS account is £26,517.16, with all but £350 of this being restricted funding to specific projects or to provide admin support.
17. AT 4th January 2021

This page is intentionally left blank

Salisbury Area Board

21 January 2021

---

## Community Area Status Report for Salisbury Community Area

### 1. Purpose of the Report

- I. To present to members a status report that summarises what the key issues are for the community area as a result of analysing local data and discussions with local stakeholders.
- II. To recommend that the Area Board endorses the report and commits itself to considering what part it can play in addressing the issues

### 2. Background

Every 3 to 4 years, Wiltshire Council's public health department working with key partners and organisations, undertakes a thorough analysis of the data available in order to provide a summary of the current and future needs of people in Wiltshire. This information which is called the "Community Area Joint Strategic Assessment" (JSNA) is broken down to and presented around Wiltshire's 20 community areas.

Previously, the information has been used to help local communities in their prioritisation and decision making. A key feature of this has been a series of events to bring representatives of the local communities together so that they can be presented with a summary of the information and through discussion agree upon what should be the top local priorities to address.

In late 2019 and early 2020, the latest JSNA process was undertaken and a series of events were organised to take place from March 2020 onwards. Unfortunately, due to the COVID-19 pandemic, these had to be cancelled.

Although, the JSNA data was released in early summer 2020 and can be viewed on the <https://www.wiltshireintelligence.org.uk/> two questions remained. Firstly, how can the impact of COVID-19 upon our communities be captured and reflected in the key issues and priorities within our local area. Issues such as mental health, debt, employment, young people and many others have been adversely affected by the pandemic. Secondly, how can we enable the community to engage with this process and to feed in their own data, knowledge and experiences.

At the same time, the Wiltshire Community Resilience Group had been set up to oversee one of the 4 recovery strands. They were seeking to establish a better understanding of the impact of COVID-19 and looked to the Area Boards to help gather local information and concerns.

As a result, it was agreed that each community area board would lead on the creation of a short "Community Area Status report" to capture and reflect what the

main messages are from the local data and the community discussions. A template was produced by the Community Engagement Team and agreed by both the resilience group and the Area Board Chairs.

### 3. **Process**

Whilst each community area is different, and each status report will reflect this, there are elements that all have in common. These are:

- I. A record of local data that has been obtained – This information has been mainly obtained from the JSA data but also includes other sources to reflect changes since the pandemic began.
- II. A record of those meetings with organisations and stakeholders where consultation has taken place.
- III. A record of the key issues that have emerged

The community engagement manager has led on this process and tried to be as inclusive and as comprehensive as possible. Despite this, it is recognised that this report is not an exhaustive summary of all the issues and everything that is happening. It is a work in progress and as new information is obtained and changes occur, the report can be updated in response. Individual or very local issues such as road junctions or a play area are not included in this report. There are alternative procedures in place to address these.

The overarching aim of this document is for Salisbury Area Board and its partners to add to our understanding of where improvement is required and see how with our communities, businesses and organisations we can start to address them. The report will also be link this to the work of Wiltshire Council, it's partners and agencies, so that collaboratively we can tackle issues including those arising from Covid-19

### 4. **Next steps**

The status report has been produced by the area board but is intended as a resource for all those within the community area. No single organisation can or should be expected to do everything and sustained improvement will only be through all of us working together with the community taking the lead.

If the status report is adopted, the proposed next steps are:

- I. The area board to consider the report and produce for itself a work plan outlining which of the priorities it will focus upon and what it is able to do to help address them. Each action will have assigned to it clear outcomes and outputs. This decision will be influenced by factors including urgency, opportunity and resources.

This work plan to be brought back to the next Area Board meeting for agreement. It will subsequently be a standing item at future area board meetings utilising a traffic light system to offer a simple visual indicator to monitor progress.

- II. As many other groups and organisations as possible are to be encouraged to also consider the report and ask themselves where they can make a difference and what they can do to support local action.
- III. Where issues are common across multiple community areas, the area board team will collate these and look to see if it is better to address these collectively across multiple community areas. Where there seems to be a Wiltshire wide concern, a more strategic approach will be considered.

It is proposed that the Area Board will use its strategic influence and delegated powers to shape the delivery of local services and actions. It will also direct its delegated resources to facilitate and support community-led projects and local initiatives that specifically address the identified priority issues.

It is recognised that some issues will be easier to tackle than others and it is important to target areas where tangible outcomes and progress can be delivered. Successes should be celebrated and the contribution from volunteers recognised and valued

## 5. **Recommendations**

- (1) That the Area Board approves and adopts the Community Status report
- (2) That the Area Board produces a rolling action plan including up to 5 priority actions at any one time to demonstrate where it will contribute to addressing the identified issues.
- (3) That the Area Board will prioritise its resources including funding upon those issues identified in the status report.
- (4) That the Area Board requests the Community Engagement Manager to work with key partners, agencies and community groups to encourage them to consider where they are best placed to take actions around the priorities identified.
- (5) That regular updates are submitted to the Area Board on progress made in relation to its own action plan.
- (6) That the Area Board expresses its thanks to those who gave their time to help bring this report together

Report Author: Marc Read – Salisbury Community Engagement Manager  
Tel: 01722 434557 E-Mail: marc.read@wiltshire.gov.uk

This page is intentionally left blank

## Salisbury Community Area Status Report

January 2021

### Background and context

The overarching aim of the Wiltshire Council recovery plan is to enable Wiltshire agencies and partners to support local residents, communities and businesses and staff from responding organisations manage their own recovery from the incident.

Salisbury has seen an incredible response to the COVID19 pandemic with volunteers leading the response and strategic partners working collaboratively to support our communities.

As we now look ahead, this document provides a summary of information that can be utilised to help inform local community recovery plans. It brings together the differing data and information sources from across the city, that will help us to understand the local impact of COVID-19. It also highlights communities that may have been disproportionately affected by the pandemic and any gaps in our current knowledge that may be suitable for further intelligence gathering.

This document considers the actions, projects and plans that are emerging from across our volunteers, community groups and partners. This subsequently provides an overview of the gaps in our local knowledge and some potential next steps for further collaborative working.

Although the impact of COVID-19 is considerable, it is recognised that some local issues already existed and that these will need to be tackled as well.

Whilst it is natural to focus on the negative impacts of COVID-19, it is important to recognise and build on any positives that have occurred. These include the closer working between organisations, increased community cohesion, new volunteers and the wider use of the internet / social media.

### Voluntary & Community Sector (VCS)

There are around 2000 charities registered in Wiltshire, though c.2,700 registered charities deliver services in Wiltshire with many more unregistered local groups and community organisations.

Wiltshire's VCS provides vital services, core to our communities' resilience and sustainability, our health, wellbeing and economy.

Predicting the long-term impact on the sector is challenging: *latest national research by ProBono Economics (Aug.2020)*:

- 85% of charities expect a negative financial impact
- 70% think it will take over a year for pre-covid income levels to be restored
- 68% expect demand for services to increase
- 58% expect to scale back their provision
- 

**Current local picture:** (as of December 2020 Wiltshire VCS Impact Survey – Part 2)

- 32% of those VCS who continued to offer a service saw a 32% increase in demand with the biggest demand being around Befriending support / supporting peoples mental health and wellbeing.
- 45 % of services remained partially open; 31% fully open and 20% still temporarily closed and 4% permanently closed
- 75% have stated they have changed the way they are delivering their core services
- 73% stated they are operating at a reduced level of service delivery
- 44% of the VCS said they will need more volunteers to meet the increased demands for their services

**Positive local grant-making:**

- Wiltshire Community Foundation c.£514,000 to 144 groups (*March to August*) and TNLCF: c.£370,000 (*April to June*) a 'drop in the ocean' when considering £150M - £200M sector income and estimated reductions in income.
- 55% of organisations had been successful in securing funding in the last 6 months (*Wiltshire VCS Impact Survey Part 2 2020*)

**Community data and information**

Local data is being collected from a range of sources to provide an overview of the current situation within our community. This is being combined with the outcomes of discussions on the impact of COVID-19 to inform the key issues emerging and where resources should be focussed.

- JSNA local data sets – collected in winter 2019 - <https://www.wiltshireintelligence.org.uk/community-area/salisbury/>
- Wiltshire CAJSNA 2020 Community Survey Results (Salisbury)
- Wiltshire Council Housing Team Universal Credit Data – December 2020
- Salisbury Area Board discussion reference City Hall - 3<sup>rd</sup> December 2020 <https://cms.wiltshire.gov.uk/ieListMeetings.aspx?CId=168&Year=0>
- Meeting with Leader & Deputy Leader of Salisbury City Council to discuss local priorities – 4<sup>th</sup> December 2020
- Wiltshire Citizen Advice – Universal Credit Data – December 2020
- Discussion with Harnham Community – 5<sup>th</sup> January 2021
- Salisbury BID – Footfall Reports 2020 - <https://salisburybid.co.uk/footfall-reports/>
- Wiltshire's Voluntary and Community Sector (VCS) Report - Prepared for Wiltshire Recovery Coordination Group (RCG) – 9<sup>th</sup> September 2020
- Meeting with Safer & Supportive Salisbury network group – 12<sup>th</sup> January 2021



## Understanding the emerging themes and impact of COVID-19

The impact of COVID-19 has affected some groups in the area more than others and exasperated some pre-existing issues. Further investigation will be required in some cases to ascertain who needs what support. Possible groups may include:

1. Youth People – Many young people in Salisbury are facing challenges around good quality employment opportunities (Apprenticeship rates are 74 per 10,000 compared to 139 per 10,000 across Wiltshire as a whole - JSNA data pack 2020), poor mental health and a disruption to education. 11% of 0-19 year olds in Salisbury are thought to be living in poverty which is higher than the Wiltshire average of 9.4% - JSNA data pack 2020
2. Older & Vulnerable People - The need to self-isolate has had a negative impact on mental health, and an increase in loneliness and depression. Those living with dementia have been one of the most vulnerable groups. Whilst digital opportunities offers advantage to some, to others this is a real challenge.
3. Families on low income – There has been an increase in debt and consequently the demand for supporting services. This is linked to employment, housing, mental health, loan sharks and other issues.
4. Black & Minority Ethnic Groups (BAME) – Salisbury, like many parts of Wiltshire, has a relatively small number of people from BAME groups (4.3% at the 2011 Census). However, better awareness, understanding and collaboration with BAME groups who reside in Salisbury needs to be explored and built.

Analysis of the data so far suggests the following issues are emerging. This list may increase and change after further consultation and as new data arises

Possible Emerging Issue	Impact of COVID-19	Supporting evidence source
<b>Community</b> - Life expectancy for both men (79 years) and women 83 years) in Salisbury is lower than that of the Wiltshire average (81 men & 84 women)	Direct impact from COVID 19 on physical and mental health, loneliness and isolation.	JSNA 2020 data
<b>Community</b> – Community Area Survey revealed top 5 priorities in Salisbury to be: Tackling climate change, improving opportunities for cycling & walking, improving waste & recycling rates, tackling anti-social behaviour and crime and increasing wildlife and bio-diversity.	Priorities may have changed due to COVID 19.	CAJSNA survey data.
<b>Community</b> – The ethnicity in Salisbury is predominantly White British 91.11%, with White other making up 4.64% and BAME making up 4.25%	Possible disproportionate COVID affect on BAME communities.	Meeting with Leader & Deputy Leader of Salisbury City Council

<p><b>Community – Volunteers -</b> Building back better requires a strategy for harnessing the skills and enthusiasm of the new volunteers who have come forward - this means getting a Volunteer Bureau infrastructure into place to both harness and support volunteers</p>	<p>Increased volunteers but little infrastructure in place to harness and support the good will going forward.</p>	<p>Safer &amp; Supportive Salisbury Networking Group</p>
<p><b>Health &amp; Wellbeing -</b> 29% of 10-11 year olds in Salisbury are obese or overweight which equates to almost 1 in 3 children in year 6.</p>	<p>Possible increase due to more time spent at home.</p>	<p>JSNA 2020 data</p>
<p><b>Health &amp; Wellbeing</b> In 2018.19, 41% of people at particular risk from the impact of flu in Salisbury received the flu vaccination. This is lower than the Wiltshire rate of 51%</p>	<p>Possible indicator to % of people who may take the COVID vaccine.</p>	<p>JSNA 2020 data</p>
<p><b>Health &amp; Wellbeing -</b> The rate of hospital admissions as a result of accidental injury in Salisbury is 170 per 10,000, compared to 140 per 10,000 persons in Wiltshire.</p>	<p>Possible fall in numbers of those attending medical help as a result of COVID.</p>	<p>JSNA 2020 data</p>
<p><b>Health &amp; Wellbeing –</b> The rate of hospital admission as a result of self-harm in Salisbury equates to 33 per 10,000 persons, compared to the Wiltshire rate of 27 per 10,000</p>	<p>Possible increase in numbers due negative mental health impact of COVID.</p>	<p>JSNA 2020 data</p>
<p><b>Health &amp; Wellbeing -</b> Before the pandemic Sport England's <i>Active Lives</i> survey (May 2019/20), which presents information on three levels of activity for adults aged 16+, showed Wiltshire's participation figures at <b>64.3% Active</b> (at least 150 minutes a week); <b>14% Fairly active</b> (an average of 30-149 minutes a week) and <b>21.7% Inactive</b> (less than 30 minutes a week).</p>	<p>Possible decrease due to the pandemic</p>	<p>Wiltshire Council Sports Development Team</p>
<p><b>Children &amp; Young People –</b> 71% of children in Salisbury achieve the expected standard in reading, writing and maths at the end of primary school. This is higher than the Wiltshire average of 64%.</p>	<p>Possible decrease due to impact of national school closures and local year group isolation due to COVID</p>	<p>JSNA 2020 data</p>

<b>Children &amp; Young People</b> – 13% of Salisbury pupils have either an Education, Health and Care Plan or Special Educational Needs.	Possible disproportionate, detrimental impact on SEND pupils as needs during COVID lock downs not being met.	JSNA 2020 data
<b>Children &amp; Young People</b> – 61% of schools in Salisbury are engaged with the Healthy Schools programme. This is higher than the Wiltshire average of 56%	Possible drop off as schools reevaluate priorities.	JSNA 2020 data
<b>Older People</b> – 68% of people aged 65+ received the flu vaccination in Salisbury in 2018/19 compared with 75% for Wiltshire.	Possible indicator to % of people who may take the COVID vaccine.	JSNA 2020 data
<b>Older People</b> – In Salisbury 41% of people aged 40-74 who were offered an NHS Health Check, had one. This is lower than the Wiltshire average of 51%.	Possible decrease in number of people accessing health related services in Salisbury due to COVID 19.	JSNA 2020 data
<b>Older People</b> – The rate of hospital admissions due to falls for people aged 65+ in Salisbury is 2,473 per 100,000 compared with 2,135 per 100,000 persons for Wiltshire.	Possible decrease in number of people accessing health related services in Salisbury due to COVID 19.	JSNA 2020 data
<b>Older People</b> – In Salisbury, the rate of carers aged 65+ known to Carers Support Wiltshire is 44 per 1,000 persons. Across Wiltshire, only 13.4% of adult carers aged 65+ feel that they have as much social contact as they would like.	Possible increase due to COVID 19 lock downs.	JSNA 2020 data
<b>Older People</b> – The rate of people aged 65+ supported to live independently in Salisbury is 56 per 1,000 persons. This is higher than Wiltshire's average of 45 per 1,000.	Possible decrease as the needs and dependencies of people increase due to COVID	JSNA 2020 data
<b>Older People – Mental health</b> - with an emphasis on building community social confidence and reconnecting with opportunities following the pandemic.	The subgroups discussed were those with identified mental health needs, older isolated people and those who have been digitally excluded (financial, digital confidence, EAL)	Safer & Supportive Salisbury network meeting

	Other things that came up here are bereavement, long covid and joblessness.	
<b>Community Safety</b> – The rate of reported anti-social behaviour in Salisbury is 30 reports per 1,000 persons. This is higher than across Wiltshire (14 per 1,000)	Possible temporary decrease due to COVID lock downs.	JSNA 2020 data
<b>Community Safety</b> – The rate of alcohol related hospital admissions in Salisbury is 2,105 per 100,000 persons. This is higher than the rate for Wiltshire of 1,827 per 100,000.	Possible increase due to increased pressure on mental health due to COVID 19 impacts.	JSNA 2020 data
<b>Community Safety</b> – 27 violent offences were recorded per 1,000 persons in Salisbury, compared with 18 per 1,000 in Wiltshire.	Possible decrease of violent offences as a result of COVID 19 lock down.	JSNA 2020 data
<b>Community Safety</b> – Salisbury has a rate of reported domestic abuse offences of 11 per 1,000 persons. This is higher than across Wiltshire (8 per 1,000).	Possible increase of domestic abuse due to COVID 19 lock down.	JSNA 2020 data
<b>Community Safety</b> – Between 2016-18 almost 3,000 road traffic collisions causing injury were recorded on Wiltshire roads. In Salisbury the rate of these collisions is 169 per 100,000 persons, lower than the rate of 196 per 100,000 persons across Wiltshire.	Possible temporary decrease due to COVID 19 lock down and reduction in traffic.	JSNA 2020 data
<b>Housing</b> – In Salisbury 9.6% of homes are considered to be in fuel poverty, compared with 9.3% in Wiltshire.	Possible increase due to increased financial pressures as a result of furlough and job loss.	JSNA 2020 data
<b>Housing</b> – In November 2019, there was demand in Salisbury for 326 affordable one bedroom homes, 191 affordable two bedroom homes and 115 affordable three or more bedroom homes.	Possible increase due to increased financial pressures as a result of furlough and job loss.	JSNA 2020 data
<b>Housing</b> – Between 2016/17 and 2018/19 580 new homes were completed in Salisbury, of which 64 were affordable homes. There are 6,060 new	Possible increase in the need of more affordable housing due to economic impact of COVID.	JSNA 2020 data

homes planned to be built in Salisbury between 2007-2026		
<b>Environment</b> – 49% of energy performance certificates issues to homes in Salisbury have a rating of D-G (low efficiency) compared to 56% in Wiltshire.	No significant impact	JSNA 2020 data
<b>Environment</b> – Less than 16% of Wiltshire’s waste went to landfill in 2018/19. 89% of Wiltshire’s recycled, composted and reused waste is now being handled in the UK. In 2018/19, there were 296 reported incidences of fly tipping in Salisbury.	Possible increase due to reduced hours and booking requirement for Household Recycling Centres	JSNA 2020 data
<b>Environment</b> – 9% of Salisbury is classified as either a Site of Special Scientific Interest (SSI) or a County Wildlife Site (CWS). 2,149 individual species have been recorded in the Salisbury area.	Possible impact as focus moves from environment to other factors as a result of COVID.	JSNA 2020 data
<b>Environment</b> – Salisbury has three air quality management areas.	No significant impact.	JSNA 2020 data
<b>Transport</b> – Salisbury has a total road network of 131kms. The committed spend for road resurfacing in Salisbury for 2019/20 was £438,642. This is 4% of Wiltshire’s total committed spend.	Possible impact due to pressures on Wiltshire Council budgets.	JSNA 2020 data
<b>Transport</b> – Between 2012-2017, there was an estimated 1.8% increase in traffic flow on roads in Salisbury. The average morning peak (7-9am) traffic speed on A-roads in Salisbury is 18.8mph	Possible reduction during lock down but no long term significant impact.	JSNA 2020 data
<b>Transport</b> – A need to assess the increase in traffic flow on key primary roads, such as Harnham Road. This is important a) because of the danger to cyclists and pedestrians, but b) because of the effect on air pollution, especially on roads (such as Harnham Rd) used by children going to school. Anecdotally I	Covid 19 definitely reduced the traffic flow, but now back to pre-pandemic levels	Harnham Community

am convinced that the traffic on Harnham Rd has substantially increased over the last few years, and will increase more with new housing developments on Netherhampton Road, and this is particularly at peak morning times when children are going to school.		
<b>Transport</b> – 11 out of 57 speed surveys conducted in Salisbury between 2017-2019 were eligible for Community Speed Watch initiatives.	No significant impact	JSNA 2020 data
<b>Transport</b> – The rate of killed or seriously injured casualties on roads in Salisbury is 39 per 100,000 persons. This is lower than the rate for Wiltshire (46 per 100,000)	No significant impact	JSNA 2020 data
<b>Transport</b> – Between September 2019 and February 2020, 117 children in Salisbury completed Bikeability training.	Reduction in number of children taking part in the scheme due to COVID.	JSNA 2020 data
<b>Employment &amp; Economy</b> – The percentage of working age population in Salisbury is 60%, equal to that across Wiltshire.	Probable impact on numbers of unemployed due to COVID.	JSNA 2020 data
<b>Employment &amp; Economy</b> – 8% of working age people in Salisbury are claiming out of work benefits, which is higher (5%0 than the Wiltshire average	Probable impact on numbers of unemployed due to COVID.	JSNA 2020 data
<b>Employment &amp; Economy</b> – A 2018 survey revealed that the biggest employment sectors in Salisbury are wholesale and retail trade and health & social care.	Probable impact on numbers of unemployed due to COVID.	JSNA 2020 data
<b>Employment &amp; Economy</b> – Salisbury has a rate of 74 apprenticeships per 10,000 people aged 16+. This is lower than the Wiltshire rate of 139 per 10,000	Probable impact on numbers of unemployed & opportunities due to COVID.	JSNA 2020 data
<b>Employment &amp; Economy</b> – The average estimated personal loan amount per person in Salisbury is £518.60, which is lower than the Wiltshire average of £796.23	Probable increase in loans due to COVID 19.	JSNA 2020 data

<p><b>Employment &amp; Economy</b> – There were 368 awarded claims through the local welfare provision scheme in Salisbury between 2016/17 and 2018/19.</p>	<p>Probable increase due to increased financial hardship.</p>	<p>JSNA 2020 data</p>
<p><b>Employment &amp; Economy</b> – Month on month increase in Universal Credit Claims across the Salisbury Job Centre Plus area, rising from 7,164 in May 2020 to 8,060 in September 2020. The biggest rise has occurred from claimants who are <b>in work</b>.</p>	<p>Probable increase due to furlough and reduction in hours due to COVID 19</p>	<p>Wiltshire Council Housing Team</p>
<p><b>Employment &amp; Economy</b> – Wiltshire Council as a social landlord has <b>1524</b> tenants in receipt of UC Housing costs (as of December 2020)</p> <p>The transition across to Universal Credit has ongoing challenges that affect Wiltshire Council tenants. E.g. The minimum 5 week wait for first payments, the way it is paid monthly in a lump sum, which in some cases causes budgeting issues etc</p>	<p>Probable increase due to furlough and reduction in hours due to COVID 19</p>	<p>Wiltshire Council Housing Team</p>
<p><b>Employment &amp; Economy</b> – The latest Universal Credit figures to mid-November 2020 reveal a higher rise of 130 cases whilst other Job Centre Plus areas in Wiltshire saw a smaller rise of 100 cases.</p>	<p>Probable increase due to furlough and reduction in hours due to COVID 19</p>	<p>Wiltshire Citizen Advice</p>
<p><b>Employment &amp; Economy</b> – Footfall for the year to November 2020 is 41.7% down on the previous year</p>	<p>Decrease due to COVID-19 restrictions.</p>	<p>Salisbury BID</p>
<p><b>Employment &amp; Economy</b> – Increase in poverty</p>	<p>Given that we can expect more people to emerge into a category of need.</p>	<p>Safer &amp; Supportive Salisbury Network Group</p>
<p><b>Arts, Culture &amp; Leisure</b> – 72% of residents in Salisbury are members of the library</p>	<p>Numbers of visits will have temporarily</p>	<p>JSNA 2020 data</p>

compared with 34 across Wiltshire. A total of 360,679 visits to Salisbury library was recorded in 2018/19.	dropped due to lock down restrictions.	
<b>Arts, Culture &amp; Leisure</b> – In Salisbury there are 21 venues hosting cultural activities. There are 414 in total across Wiltshire.	Possible reduction in venues. E.g. City Hall closed indefinitely.	JSNA 2020 data Salisbury Area Board discussion on City Hall 3 <sup>rd</sup> December 2020
<b>Arts, Culture &amp; Leisure</b> – 2.8% of working people in Salisbury are employed in the arts, entertainment and recreation sector compared with 2.5% across Wiltshire.	Probable number of job losses in this sector due to COVID restrictions.	JSNA 2020 data
<b>Arts, Culture &amp; Leisure</b> – In 2018/19 there were 512,474 visits to Five Rivers Health & Wellbeing Centre.	Reduction in numbers due to COVID restrictions and downturn in individual economic situation.	JSNA 2020 data

It is important that this is an inclusive process as possible with everyone given an equal opportunity to feed in and partake in this recovery work. However, it is recognised that some may choose not to engage, and that work will take place that is not captured in this document.

### How local actions can be supported

The local response within Salisbury is one of co-production recognising that to move forward beyond COVID 19, it is important that we work together, sharing information and resources where appropriate.

The Area Board covers the whole community area and is responsible for this document. It links local delivery to Wiltshire Council, the Police, Public Health, the Voluntary & Community Sector and other partners. It is an accountable body with influence and powers. It has its own funding to help support local initiatives. The Area Board will use this document to support local recovery and also encompass issues that were existing prior to COVID-19.

Wiltshire Council's thematic approach to the county's recovery is structured around the following 4 themes, and it will be helpful to use these as we progress our local recovery in Salisbury:

- I. **Economy and employment**
- II. **Health, well-being and adult care**
- III. **Community Resilience**
- IV. **Young people, education and children**

The Area Board, working with existing (and where needed) new sub-groups, Salisbury City Council, community groups, the voluntary & community sector and other partner organisations, will carry out further investigation on the community issues, themes and priorities, bringing together work currently happening and identifying areas for development.



The Area Board will have updates of how this work is progressing as a standing item at its meetings.

#### Next steps

- I. Engage and consult with partner organisations and community groups (From December 2020 onwards)
- II. Update this document as a result of engagement (ongoing)
- III. Bring forward this document for discussion at Area Board meeting (21<sup>st</sup> January 2021)
- IV. Review this document regularly in response to changes and celebrate completed actions every two months or as required (From May 2021)

This page is intentionally left blank

**Report to:** Salisbury Area Board  
**Date of meeting:** January 2021  
**Title of report:** Salisbury Area Grant Report

### Purpose of the Report:

- To provide detail of the grant applications made to the Salisbury Area Board. These could include; community area grants, health and wellbeing, young persons grants and Area Board initiatives.
- To document any recommendations provided through sub groups.

### Area Board current financial position

	Community Area Grants	Young People	Health and Wellbeing
<b>Opening balance 2019/20</b>	£67,078.00	£27,542.00	£7,700.00
<b>Awarded to date</b>	£30,014.72	£12,010.00	£3,910.00
<b>Current Balance</b>	£24,810.16	£14,962.00	£1,004.18
<b>Balance if all grants are agreed based on recommendations</b>	£9,610.16	£3,462.00	£1,004.18

### Grant Funding application summary

#### Community Area Grants

Applicant	Amount requested
<b>Applicant:</b> ArtCare <b>Project Title:</b> ArtCare Well-being TV at Salisbury District Hospital  <a href="#">View full application</a>	£2,500.00
<b>Applicant:</b> The Bridge Youth Project <b>Project Title:</b> The Bridge Youth Project Online Mentoring Programme Pastoral care for students in schools  <a href="#">View full application</a>	£700.00

<b>Applicant:</b> Area Board Initiative <b>Project Title:</b> Street Name Plates	£12,000.00
<a href="#">View full application</a>	

## Young People

<b>Applicant</b>	<b>Amount requested</b>
<b>Applicant:</b> Splash (Part of Community First) <b>Project Title:</b> Splash in Salisbury	£5,000.00
<a href="#">View full application</a>	
<b>Applicant</b>	Amount requested
<b>Applicant:</b> Rise 61 <b>Project Title:</b> Bike Hub - After School Club	£5,000.00
<a href="#">View full application</a>	
<b>Applicant</b>	Amount requested
<b>Applicant:</b> MySalisbury <b>Project Title:</b> Project Spark Working Title	£4,991.97
<a href="#">View full application</a>	
<b>Applicant</b>	Amount requested
<b>Applicant:</b> St Francis Church <b>Project Title:</b> St. Francis Youth CV19 Recovery amp Detached	£1,500.00
<a href="#">View full application</a>	

## Health and Wellbeing

**There are no Health & Wellbeing applications to consider at this meeting.**

### 1. Background

Area Boards have authority to approve funding under powers delegated to them. Under the Scheme of Delegation Area Boards must adhere to the Area Board Funding and Grants Criteria. This document is available on the council's website.

Three funding streams are available to the Area Board, each with an annually awarded amount. These funding streams are as follows:

- Community Area Grants (capital)
- Young People (revenue)
- Health and Wellbeing (revenue)

The Area Board will be advised of the funding available prior to their first meeting of each financial year.

## **2. Main Considerations**

2.1. Councillors need to be satisfied that the applications meet the requirements as set out in the Area Board Funding and Grants Criteria and that the health and wellbeing and young persons funding guidelines have been adhered to.

2.2. Councillors must ensure that the distribution of funding is in accordance with the Scheme of Delegation to Area Boards.

2.3. Councillors need to consider any recommendations made by sub groups of the Area Boards.

## **3. Environmental & Community Implications**

Grant funding will contribute to the continuance and/or improvement of cultural, social and community activity and wellbeing in the community area, the extent of which will be dependent upon the individual project.

## **4. Financial Implications**

Councillors must ensure that the Area Board has sufficient funding available to cover the grants awarded.

## **5. Legal Implications**

There are no specific legal implications related to this report.

## **6. Human Resources Implications**

There are no specific human resources implications related to this report.

## **7. Equality and Inclusion Implications**

Community Area Boards must fully consider the equality impacts of their decisions in order to meet the Council's Public Sector Equality Duty.

Community Area Grants will give local community and voluntary groups, Town and Parish Council's equal opportunity to receive funding towards community based projects and schemes where they meet the funding criteria.

## **8. Safeguarding Implications**

The Area Board has ensured that the necessary policies and procedures are in place to safeguard children, young people and vulnerable adults.

## **9. Applications for consideration**

## Community Area Grants

Application ID	Applicant	Project Name	Requested
<a href="#">3935</a>	ArtCare	ArtCare Well-being TV at Salisbury District Hospital	£2500.00
<p><b>Project Description:</b> To establish a designated ArtCare link on Hospedia bedside TVs at Salisbury District Hospital SDH to broadcast well-being activities such as live music theatre storytelling art and craft tutorials. Activity will be populated on ArtCares website and be available at the bedside for free to all SDH patients staff and local community. This will complement our wider activity programme including the Elevate project bringing live music and arts activity to patients on the wards which we are currently unable to deliver in its full capacity due to Covid restrictions. This includes working with local 3rd sector organisations to expand content for SDH patients and introduce them to creative opportunities in the local area.</p>			
<p><b>Proposal</b> That the Area Board determines the application.</p>			

Application ID	Applicant	Project Name	Requested
<a href="#">3990</a>	The Bridge Youth Project	The Bridge Youth Project Online Mentoring Programme Pastoral care for students in schools	£700.00
<p><b>Project Description:</b> We have developed a new online mentoring programme for students in schools which links students who have struggled as a result of COVID with a mentor from the community. This all happens online over a 10-week duration. Full training enhanced DBS safeguarding etc is given to the mentors and already we have Sarum Academy and Wyvern St Eds on board. We anticipate that more schools will come on board later in the year. The mentoring programme gives young people strategies to support their mental wellbeing and helps to unpack every dimension of their lives including home life friendships academic work activities the future how COVID has impacted them etc...We need a good quality laptop to facilitate these sessions throughout the duration of this project which begins in January 2021.</p>			
<p><b>Proposal</b> That the Area Board determines the application.</p>			

Application ID	Applicant	Project Name	Requested
<a href="#">4002</a>	Area Board Initiative	Street Name Plates	£12,000.00
<p><b>Project Description:</b> To repair replace all broken damaged missing street nameplates within the Salisbury Area Board Divisions as per lists supplied by local Councillors and residents. This builds on the previous years work which has been very well received by the general public.</p>			
<p><b>Proposal</b> That the Area Board determines the application.</p>			

## Young People

Application ID	Applicant	Project Name	Requested
<a href="#">3963</a>	Splash (Part of Community First)	Splash in Salisbury	£5,000.00
<p><b>Project Description:</b> Splash provides positive activities youth worker support for young people facing challenges in their lives including those who are Looked After with SEN young victims of crime. Often challenges such as isolation mental health issues poverty or bullying negatively impact a young persons confidence self-esteem. Without interventions this can affect their attainment future aspirations. Splash provides fun opportunities where young people learn help support one another begin to see that they are liked accepted valued. Our activities raise aspirations confidence self-esteem empower young people to realise their own capabilities potential.</p>			
<p><b>Proposal</b> That the Area Board considers the recommendation made by the youth panel, which is to fund the project in full.</p>			

Application ID	Applicant	Project Name	Requested
<a href="#">872</a>	Rise 61	Bike Hub – After School Club	£5,000.00
<p><b>Project Description:</b> We would like to purchase full suspension mountain bikes to be used by our after-school bike club after school club to take young people on regular mountain bike excursions. These trips will increase opportunities for informal education build confidence and offer a healthy activity with an alternative adrenaline rush than that experienced with substance abuse and crime.</p>			
<p><b>Proposal</b> That the Area Board considers the recommendation made by the youth panel, which is to fund the project in full.</p>			

Application ID	Applicant	Project Name	Requested
<a href="#">873</a>	MySalisbury	Project Spark Working Title	£4,991.97
<p><b>Project Description:</b> A youth community project aimed at 13-19-year-olds offering media production project workshops run during a 2 or 3-hour weekly group session with each project running over a 6 or 7-week half term. There will be 6 different skill workshops being run over the academic year during school term time. All workshop projects will assume no knowledge and teach the skills and knowledge from the ground up so all members of the group are able to perform a number of roles within the production. The workshops aim to increase communication confidence work-related soft skills media literacy and the STEM aspects of media production.</p>			
<p><b>Proposal</b> That the Area Board considers the recommendation made by the youth panel, which is to defer until May's area board as this project cannot happen until restrictions are lifted.</p>			

Application ID	Applicant	Project Name	Requested
<a href="#">876</a>	St Francis Church	St. Francis Youth CV19 Recovery amp Detached	£1,500.00
<b>Project Description:</b> We would like to launch a detached youth work project to survey our community to better understand the needs of young people and to signpost young people to our youth club which aims to tackle youth loneliness.			
<b>Proposal</b> That the Area Board considers the recommendation made by the youth panel, which is to fund the project in full.			

### Health and Wellbeing

There are no Health & Wellbeing grants to consider at this meeting.

No unpublished documents have been relied upon in the preparation of this report.

### Report Author:

Marc Read, Community Engagement Manager [marc.read@wiltshire.gov.uk](mailto:marc.read@wiltshire.gov.uk)



Ward	Street Name	Estimated Costs	Comments
Bemerton	Ayrshire Close	£249.66	Plastic street nameplate assembly.
Bemerton	Cedar Close	£231.72	Plastic street nameplate assembly.
Bemerton	Herbert Road	£17.94	Removal of existing sign only.
Bemerton	Whitbred Road	£499.32	Plastic street nameplate assemblies. 2 x Signs required.
Fisherton & Bemerton Village	Canadian Avenue	£486.44	Plastic street nameplate assemblies. 2 x Signs required.
Harnham	Ancient Way	£729.66	Plastic street nameplate assemblies. 3 x Signs required.
Harnham	Bishops Drive	£771.33	Plastic street nameplate assemblies. 3 x Signs required.
Harnham	Chiselbury Grove	£499.32	Plastic street nameplate assemblies. 2 x Signs required.
Harnham	Christopher Close	£249.66	Plastic street nameplate assembly.
Harnham	Falconsway	£499.32	Plastic street nameplate assemblies. 2 x Signs required.
Harnham	Folly Close	£499.32	Plastic street nameplate assemblies. 2 x Signs required.
Harnham	Francis Way	£486.44	Plastic street nameplate assemblies. 2 x Signs required.
Harnham	Grasmere Close	£499.32	Plastic street nameplate assemblies. 2 x Signs required.
Harnham	Harvard Close	£499.32	Plastic street nameplate assemblies. 2 x Signs required.
Harnham	Hawksridge	£499.32	Plastic street nameplate assemblies. 2 x Signs required.
Harnham	Heronswood	£235.49	Die pressed aluminium assembly (to match existing sign on the opposite side of the road).
Harnham	Kingfisher Close	£499.32	Plastic street nameplate assemblies. 2 x Signs required.

Harnham	Linnetsdene	£499.32	Plastic street nameplate assemblies. 2 x Signs required.
Harnham	Longhill Drive	£1,019.61	Plastic street nameplate assemblies. 4 x Signs required.
Harnham	Maplecroft	£296.39	Plastic street nameplate assembly.
Harnham	Martins Close	£290.83	Plastic street nameplate assembly.
Harnham	Montague Road	£65.11	Wall mounted sign - die pressed aluminium assembly.
Harnham	Ravenscroft	£499.32	Plastic street nameplate assemblies. 2 x Signs required.
Harnham	Rowbarrow Close	£499.32	Plastic street nameplate assemblies. 2 x Signs required.
Harnham	Swallowmead	£1,079.22	Plastic street nameplate assemblies. 4 x Signs required.
Harnham	Viking Way	£486.44	Plastic street nameplate assemblies. 2 x Signs required.
Harnham	Woodbury Gardens	£249.66	Plastic street nameplate assembly.
St. Edmund & Milford	Summerlock Approach	£17.94	Removal of existing sign only.
St. Francis & Stratford	Chatham Close	£499.32	Plastic street nameplate assemblies. 2 x Signs required.
St. Francis & Stratford	Park Lane	£267.39	Plastic street nameplate assembly.
St. Mark's & Bishopdown	Aston Mead	£243.22	Plastic street nameplate assembly.
St. Mark's & Bishopdown	Bingham Road	£243.22	Plastic street nameplate assembly.
St. Mark's & Bishopdown	Cheverell Avenue	£610.72	1 x Removal of existing sign only. Plastic street nameplate assemblies. 2 x Signs required.
St. Mark's & Bishopdown	Fison Walk	£1,061.07	Plastic street nameplate assemblies. 4 x Signs required.
St. Martin's & Cathedral	Burford Road	£225.28	Plastic street nameplate assembly.
St. Martin's & Cathedral	New Bridge Road	£243.22	Plastic street nameplate assembly.
St. Martin's & Cathedral	Shady Bower	£225.28	Plastic street nameplate assembly.
St. Paul's	Ashfield Road	£225.28	Plastic street nameplate assembly.
St. Paul's	George Street	£63.49	Wall mounted sign - die pressed aluminium assembly.
St. Paul's	George Street South	£71.59	Wall mounted sign - die pressed aluminium assembly.

St. Paul's	Lees Court	£120.50	Wall mounted signs - die pressed aluminium assemblies. 2 x Signs required.
St. Paul's	Hawthorn Close	£499.32	Plastic street nameplate assemblies. 2 x Signs required.
St. Paul's	Lower Road	£1,498.18	Plastic street nameplate assemblies. 7 x Signs required.
St. Paul's	St. Paul's Road	£225.28	Cost of works included in wall mounted signs works.
St. Paul's	West End Road	£231.72	Wall mounted sign - die pressed aluminium assembly.
St. Paul's	Windsor Street	£0.00	Cost of works included in wall mounted signs works.
<b>Sub-Total</b>		<b>£19,010.14</b>	
<b>Wall Mounted Sign Works<sup>1</sup></b>		<b>£750.00</b>	
<b>Contingency<sup>2</sup></b>		<b>£239.86</b>	
<b>Total</b>		<b>£20,000.00</b>	

### Notes

<sup>1</sup> - Although Ringway will provided the signs all the wall mounted works will be undertaken by Signs In Motion as they offer a significant cost saving over Ringway for this aspect of the work. This is the same approach undertaken during the 2019/2020 financial year in respect of these signs.

<sup>2</sup> - A small contingency has been allowed for. Figure chosen to provide an overall round total. Any unspent funding will be returned to the budget holder.

Ward	Street Name	Estimated Costs	Comments
Harnham	Ancient Way	£729.66	Plastic street nameplate assemblies. 3 x Signs required.
Harnham	Bishops Drive	£771.33	Plastic street nameplate assemblies. 3 x Signs required.
Harnham	Chiselbury Grove	£499.32	Plastic street nameplate assemblies. 2 x Signs required.
Harnham	Christopher Close	£249.66	Plastic street nameplate assembly.
Harnham	Falconsway	£499.32	Plastic street nameplate assemblies. 2 x Signs required.
Harnham	Folly Close	£499.32	Plastic street nameplate assemblies. 2 x Signs required.
Harnham	Francis Way	£486.44	Plastic street nameplate assemblies. 2 x Signs required.
Harnham	Grasmere Close	£499.32	Plastic street nameplate assemblies. 2 x Signs required.
Harnham	Harvard Close	£499.32	Plastic street nameplate assemblies. 2 x Signs required.
Harnham	Hawksridge	£499.32	Plastic street nameplate assemblies. 2 x Signs required.
Harnham	Heronswood	£235.49	Die pressed aluminium assembly (to match existing sign on the opposite side of the road).
Harnham	Kingfisher Close	£499.32	Plastic street nameplate assemblies. 2 x Signs required.
Harnham	Linnetsdene	£499.32	Plastic street nameplate assemblies. 2 x Signs required.
Harnham	Longhill Drive	£1,019.61	Plastic street nameplate assemblies. 4 x Signs required.
Harnham	Maplecroft	£296.39	Plastic street nameplate assembly.
Harnham	Martins Close	£290.83	Plastic street nameplate assembly.
Harnham	Montague Road	£65.11	Wall mounted sign - die pressed aluminium assembly.
Harnham	Ravenscroft	£499.32	Plastic street nameplate assemblies. 2 x Signs required.
Harnham	Rowbarrow Close	£499.32	Plastic street nameplate assemblies. 2 x Signs required.
Harnham	Swallowmead	£1,079.22	Plastic street nameplate assemblies. 4 x Signs required.
Harnham	Viking Way	£486.44	Plastic street nameplate assemblies. 2 x Signs required.
Harnham	Woodbury Gardens	£249.66	Plastic street nameplate assembly.
St. Mark's & Bishopdown	Aston Mead	£243.22	Plastic street nameplate assembly.
St. Mark's & Bishopdown	Bingham Road	£243.22	Plastic street nameplate assembly.

St. Mark's & Bishopdown	Cheverell Avenue	£610.72	1 x Sign to be removed. Plastic street nameplate assemblies. 2 x Signs required.
St. Mark's & Bishopdown	Fison Walk	£1,061.07	Plastic street nameplate assemblies. 4 x Signs required.
<b>Sub-Total</b>		<b>£13,111.27</b>	
<b>Contingency<sup>1</sup></b>		<b>£388.73</b>	
<b>Total</b>		<b>£13,500.00</b>	

**Notes**

<sup>1</sup> - A small contingency has been allowed for. Figure chosen to provide an overall round total. Any unspent funding will be returned to the budget holder.

This page is intentionally left blank